

Uniform Crime Statistics, Part I Crime 2008

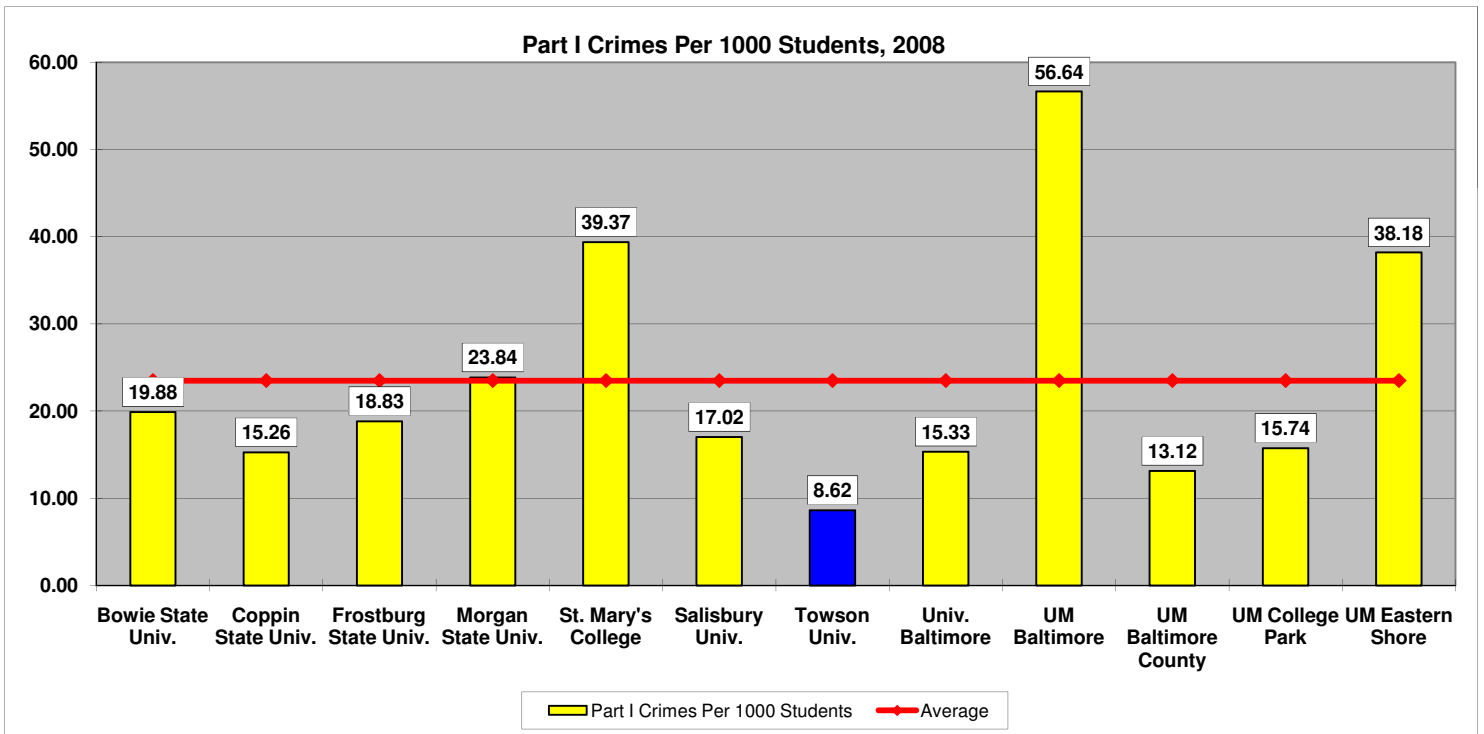
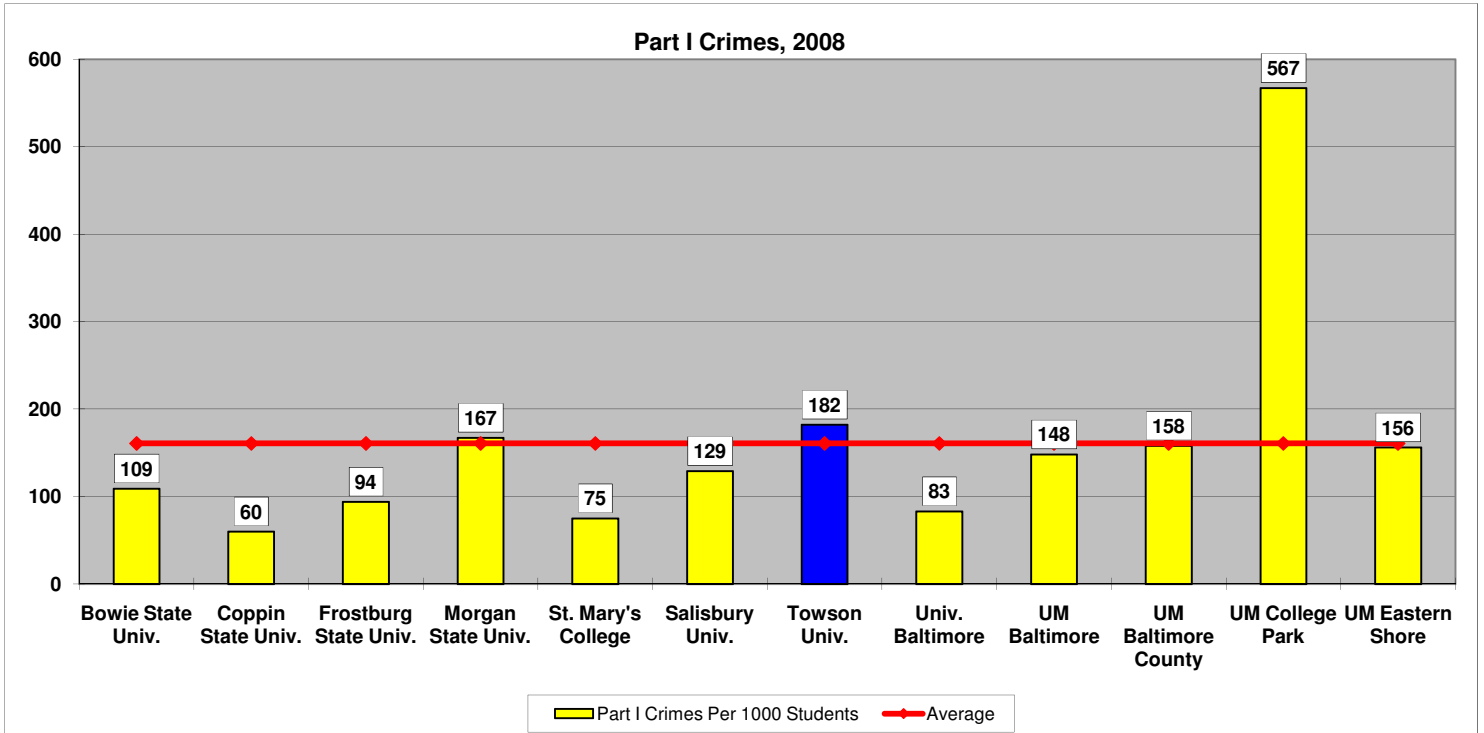
| Institution | Enrollment ¹ | Enrollment Divided by 1000 | Violent Crime ² | Violent Crimes Per 1000 | Property Crime ³ | Property Crimes Per 1000 | Total Part I Crime | Total Part I Crime Per 1000 |
|----------------------------------|-------------------------|----------------------------|----------------------------|-------------------------|-----------------------------|--------------------------|--------------------|-----------------------------|
| Baltimore City | 634,549 | 634.55 | 10,132 | 15.97 | 31,033 | 48.91 | 41,165 | 64.87 |
| Baltimore County | 787,558 | 787.56 | 4,901 | 6.22 | 26,611 | 33.79 | 31,512 | 40.01 |
| Baltimore MSA⁴ | 2,667,133 | 2667.13 | 20,069 | 7.52 | 94,267 | 35.34 | 114,336 | 42.87 |
| Bowie State Univ. | 5,483 | 5.48 | 13 | 2.37 | 96 | 17.51 | 109 | 19.88 |
| Coppin State Univ. | 3,932 | 3.93 | 4 | 1.02 | 56 | 14.24 | 60 | 15.26 |
| Frostburg State Univ. | 4,993 | 4.99 | 8 | 1.60 | 86 | 17.22 | 94 | 18.83 |
| Morgan State Univ. | 7,005 | 7.01 | 31 | 4.43 | 136 | 19.41 | 167 | 23.84 |
| St. Mary's College | 1,905 | 1.91 | 1 | 0.52 | 74 | 38.85 | 75 | 39.37 |
| Salisbury Univ. | 7,581 | 7.58 | 4 | 0.53 | 125 | 16.49 | 129 | 17.02 |
| Towson Univ. | 21,111 | 21.11 | 10 | 0.47 | 172 | 8.15 | 182 | 8.62 |
| Univ. Baltimore | 5,415 | 5.42 | 2 | 0.37 | 81 | 14.96 | 83 | 15.33 |
| UM Baltimore | 2,613 | 2.61 | 8 | 3.06 | 140 | 53.58 | 148 | 56.64 |
| UM Baltimore County | 12,041 | 12.04 | 3 | 0.25 | 155 | 12.87 | 158 | 13.12 |
| UM College Park | 36,014 | 36.01 | 20 | 0.56 | 547 | 15.19 | 567 | 15.74 |
| UM Eastern Shore | 4,086 | 4.09 | 7 | 1.71 | 149 | 36.47 | 156 | 38.18 |

¹Fall 2008 enrollment from schools' web sites. Does not include staff and faculty.

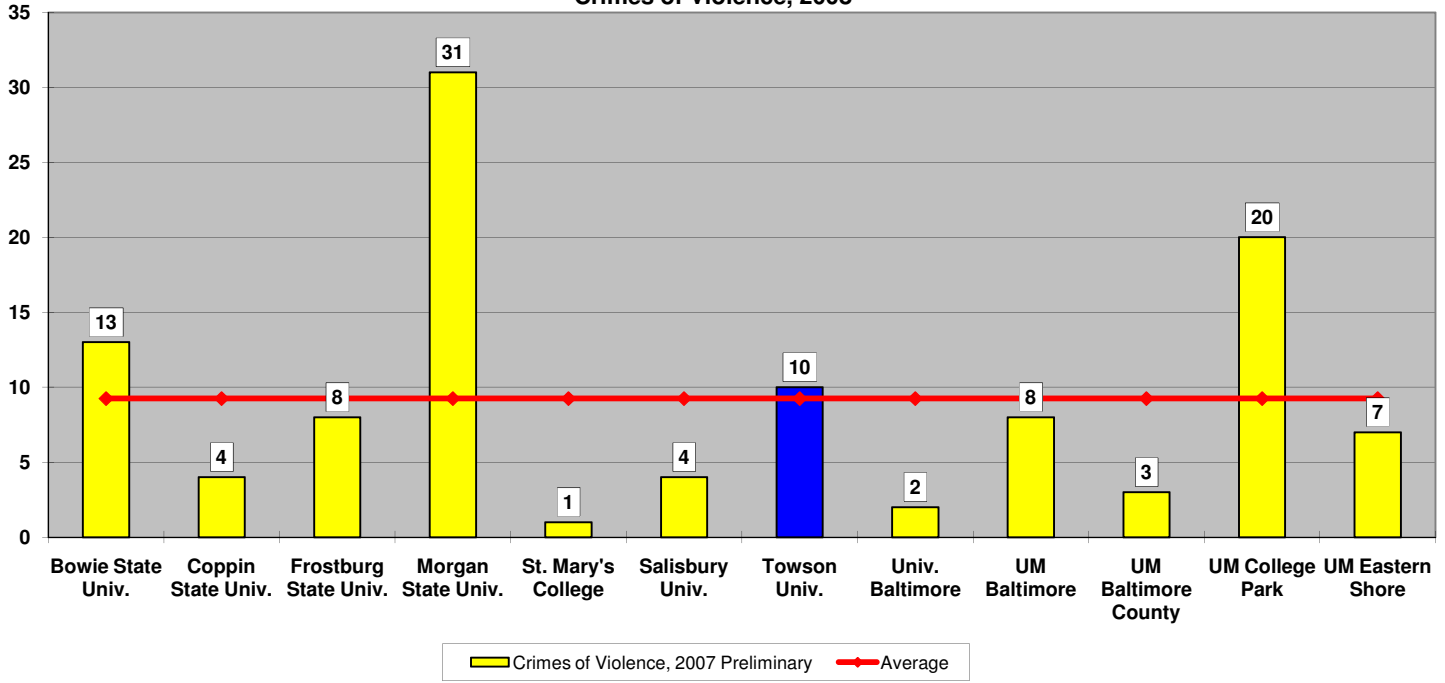
²Violent Crimes: Murder, Forcible Rape, Robbery, and Aggravated Assault.

³Property Crimes: Burglary, Larceny/Theft, and Motor Vehicle Theft.

⁴Metropolitan Service Area: Baltimore City, Anne Arundel, Baltimore, Carroll, Harford, Howard, & Queen Annes County: Crime in Maryland, 2008 UCR



Crimes of Violence, 2008



Crimes of Violence Per 1000 Students, 2008

