

Crystal Reports 9.0

Sorting and Suppressing Data (Lesson 7)

Lesson 7

Introduction

Reports can be more effectively used when the data is easy to read.

Process Summary

Introduction
 Sorting Records
 Suppressing Data

Sorting Records

After generating a report in Crystal 9.0, you may end up with some rows looking like this:

EMPLID	NAME	ACAD_PLAN	ACAD_PLAN_TYPE
0000000	Smith, Joe	MCOM	MAJ
0000000	Smith, Joe	POSC	MIN
0000000	Smith, Joe	MCOM	MAJ
0000000	Smith, Joe	POSC	MIN

It is important, when eliminating duplicate rows, that the report be sorted based on select fields in the record selection. In this report, the fields would be EMPLID, ACAD_PLAN and ACAD_PLAN_TYPE.

 By default, the report already shows the grouped field as the primary sort field. This can not be modified, unless the group is removed or changed.

We want to end up with matching rows together as in this example:

0000000	Smith, Joe	MCOM	MAJ
0000000	Smith, Joe	MCOM	MAJ
0000000	Smith, Joe	POSC	MIN
0000000	Smith, Joe	POSC	MIN

Go to **Report > Record Sort Expert**. Select the fields to be sorted and in the specific order. The records should be sorted based on importance. Preview the report and drill down to an EMPLID.

Suppressing Data

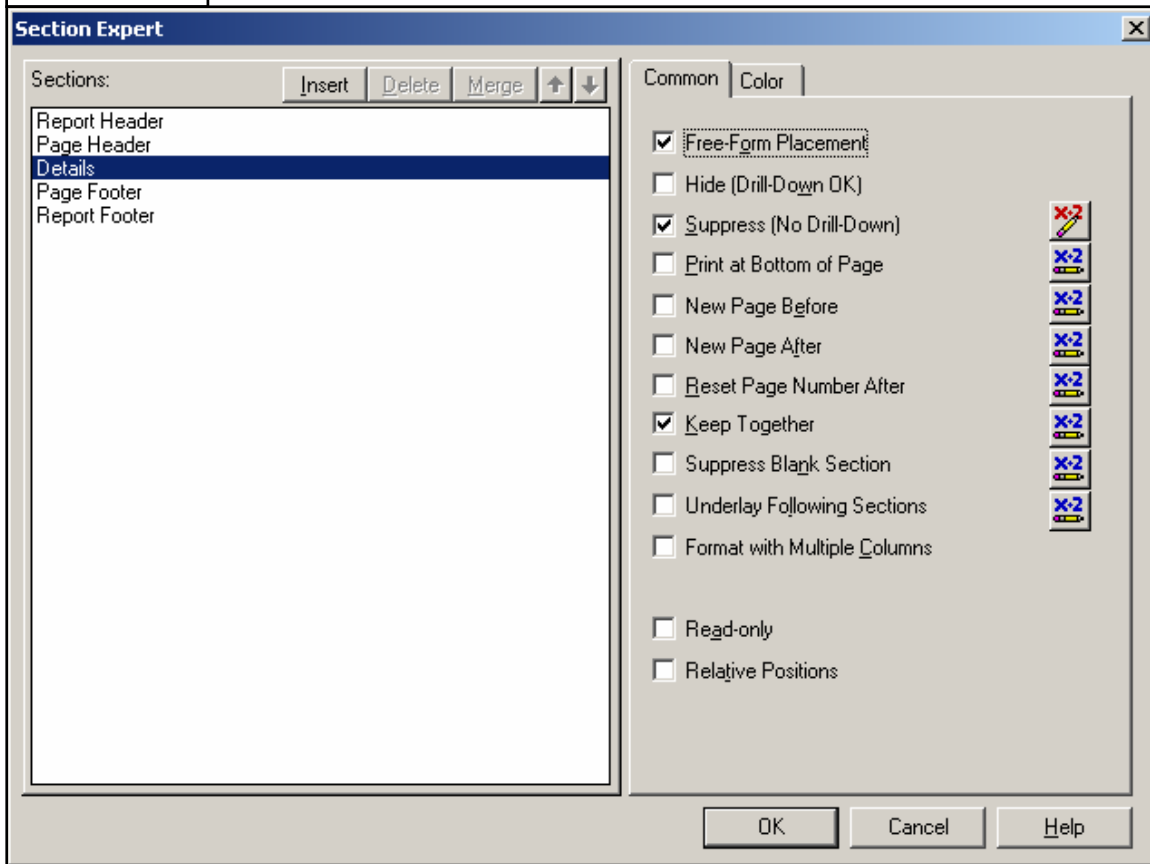
Now that our report has been grouped and sorted, we will create a Boolean (T/F) condition, i.e. if the data in the current row is equal to the data in the row preceding it, then suppress the data in the current row.

Be sure you are in **Design Mode** and right-click on the **Details** section (in the gray margin). Select **Section Expert. Details** should be highlighted.

If not, select **Details**. There is no place here to suppress duplicates; however, the formula we will create will do that. Check the box next to **Suppress (No Drill Down)**. Then click on the "X-2" box to the right.

After you click the "X-2", the Formula Workshop box will open.

Figure 1



If we were creating a report that only includes names and addresses, and the information in all the fields for each record is the same, a simple formula shown below could be used.

NOT OnFirstRecord and

```
{PS_TU_ENROLLMNT.EMPLID} =previous({PS_TU_ENROLLMNT.EMPLID})
```

In our report, however, we have students with two plans with duplicate rows for each plan. So, we will have to include the fields that are used in our record sort.

Type in the following formula in the Formula Workshop (Fig 2, #1):

NOT OnFirstRecord and

```
{PS_TU_ENROLLMNT.EMPLID} =previous({PS_TU_ENROLLMNT.EMPLID}) and
```

```
{PS_TU_PRG_PLN_SBPL.ACAD_PLAN} =previous({PS_TU_PRG_PLN_SBPL.ACAD_PLAN})  
and
```

```
{PS_TU_PRG_PLN_SBPL.ACAD_PLAN_TYPE} =previous  
({PS_TU_PRG_PLN_SBPL.ACAD_PLAN_TYPE})
```



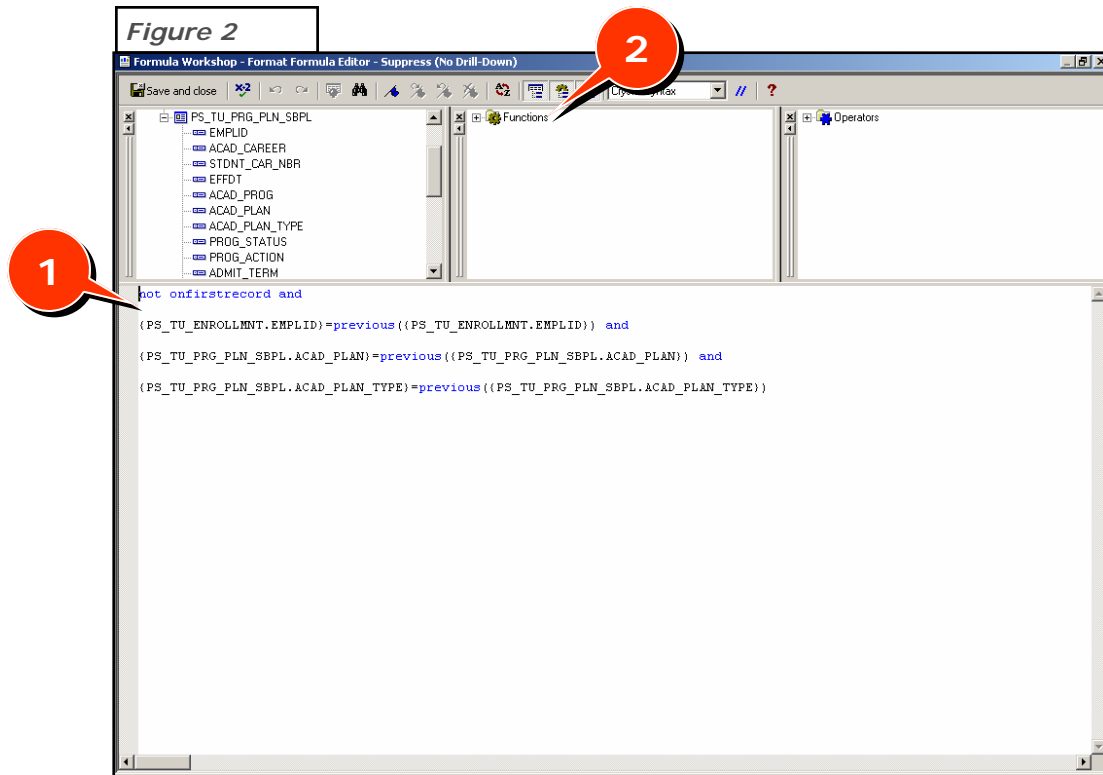
Rather than type the entire field name, expand the data source or table (depending on what is visible) in the first box and double-click on the EMPLID field from the PS_TU_ENROLLMNT table. This will automatically place the field in the workshop window. You may also do the same for the functions.

Functions > Print State > OnFirstRecord (Fig 2, 2)

Functions > Print State > Previous.

★ When using function, the field names must be encased in parenthesis (outside the curly brackets).

Click **Save and Close**. If there are no errors, you will be returned to the Section Expert box.



Click **OK**. Then preview the report. The resulting record set will appear as follows:

0000000	Smith, Joe	MCOM	MAJ
0000000	Smith, Joe	POSC	MIN

All duplicates for those students having one of the two majors have now been removed from the report.

The formula created above took care of the entire Detail row; however, there is still duplicate information in some rows, i.e., EMPLID, LAST_NAME, etc. If the report is to be exported to Excel, this may not be a problem. If, the report is to be exported to the PDF format, you may want to eliminate duplicates.

