

# Windows Vista

## Defender



### Overview

Windows Defender, is a new version of a feature previously known as Microsoft AntiSpyware, Defender is designed to prevent, remove and quarantine spyware that might attack Windows Vista.

Windows Defender automatically scans your system and includes a number of Real-Time Security Agents that monitor areas of Windows for changes which may be caused by spyware. You can also easily remove ActiveX applications that are installed. Defender provides support for Microsoft's SpyNet network which allows users to report suspicious applications to Microsoft.

### Process Summary

**Overview**

- Configure Settings

**Options**

- Automatic Scanning
- Default Actions
- Real-time Protection
- Advanced Options

### To configure general settings in Defender:

1. Click the **Start** button.
2. Select the **Control Panel**.
3. Click the **Security** icon in the Control Panel (Figure 1).
4. Open **Windows Defender** (Figure 2).
5. Click **Tools**, and then click **Options**.
6. On the **Options** page (Figure 3) the following options sections are provided:

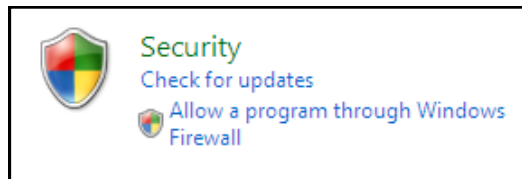


Figure 1

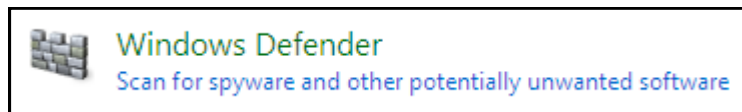


Figure 2

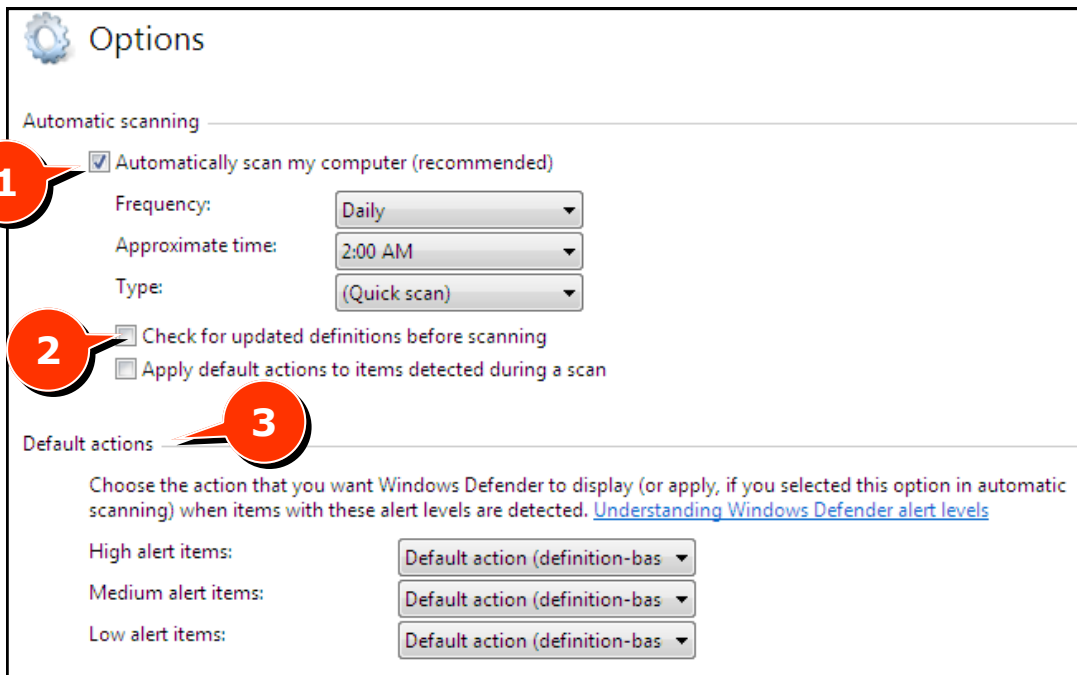


Figure 3

### **Automatic Scanning**

- a. To turn on automatic scanning, select the **Automatically Scan My Computer** check box (Figure 3, 1) and then set the scan frequency, time of day, and type of scan. This is the recommended setting.
- b. If you want Windows Defender to check for updates before scanning, select **Check For Updated Definitions Before Scanning** (Figure 3, 1). This is also recommended.

### **Default Actions** (Figure 3, 3)

- Used to set the default action to take based on the alert level of a detected spyware program.
- High alert level is for the most dangerous software that has the highest probability of doing damage to a computer.
- Medium alert level is for moderately dangerous software that has a moderate probability of doing damage to a computer or performing nuisance/malicious actions.
- Low alert level is for software with a low danger rating or is mainly nuisance software

### **Real-Time Protection Options**

Turns on real-time protection. Real-time protection scans and monitors your system while you work to prevent problems pro-actively

### **Advanced Options**

Configures advanced techniques for detecting spyware. Allows you to scan inside archives to detect suspicious files.

### **Administrator Options**

Allows you to turn Windows Defender on or off. If you clear the Use Windows Defender check box, your computer will not have protection against spyware. You can also specify whether normal users can perform scans and remove potentially unwanted software. By default, this is allowed and is the recommended configuration.