

# Microsoft FrontPage 2003

## Behaviors



### What Is A Behavior?

In Microsoft FrontPage 2003, users can add behaviors to their Web pages. **Behaviors** are scripting options, lines of HTML code, that can be inserted by FrontPage to add interactivity or functionality to objects on your Web page. Behaviors have two parts, events and actions, that will occur when a site visitor interacts with an element of your Web page. **Events** are the triggers which cause a Web browser to initiate a script. An **action** is what happens when the Web browser executes the script. When you attach a behavior to a Web page element, if the event occurs, then action takes place.

**Summary**

1. What Is A Behavior?
2. Check Browser
3. Go To URL
4. Play Sound
5. Popup Message
6. Preload Images
7. Swap Image
8. Swap Image Restore
9. Delete a Behavior

### Check Browser

When building a Website, it is always a good idea to test the site in more than one Web browser. Some Web page elements behave differently in certain Web browsers. If one of your Web page elements is not doing what you intended it to do when viewing it from a specific web browser, you can insert a behavior to forward visitors to a page designed to be viewed in that specific browser. The page you forward the user to can be modified to have that element work correctly in the browser.

To add a Check Browser behavior to your page:

1. Click on **Format** (Figure 1, 1) in the menu bar and choose **Behaviors** (Figure 1, 2).
2. The Behaviors task pane opens up. Click on **Insert** (Figure 1, 3) and choose **Check Browser** (Figure 1, 4).
3. The Check Browser dialog box opens up. Identify which browser you would like an action to take place for (Figure 2, 1).
4. Place a check mark in the box (Figure 2, 2) and type in the URL of the website you would like visitors with that Web browser to be forwarded to. You can also add a URL for users not using that browser to have them be taken to a different page.

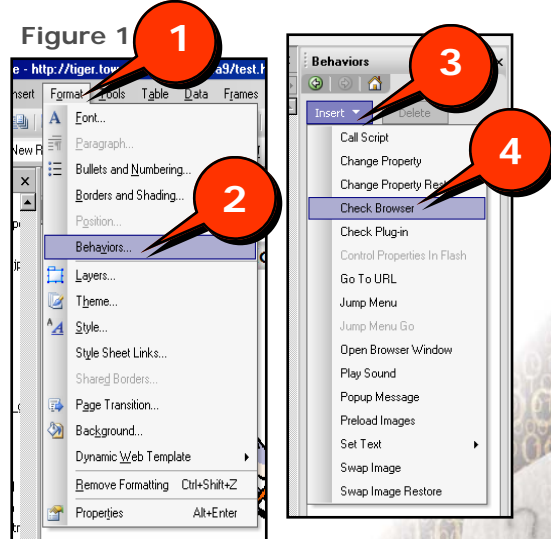
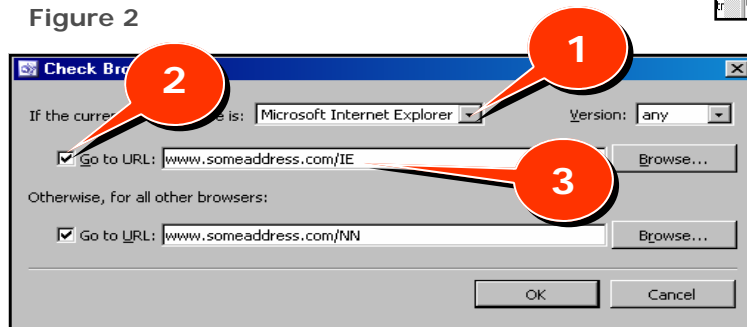


Figure 2



## Go To URL

---

You can set up a forward on your Web page to send visitors to a different URL. For example, if you change the URL of your Web site, you should set up a forward at the old address to send visitors to the new address. If someone has the old URL saved as a Favorite and they click on that favorite, the visitor will not be able to access the new Web site unless you establish a forward. To insert a forward onto your Web site:

1. Click on **Format** in the Menu bar and choose **Behaviors**.
2. Click on **Insert** in the Behaviors Task Pane and choose **Go To URL**.
3. Type in the URL you would like the visitors to be forwarded to.
4. Click **OK**.

## Play Sound

---

FrontPage allows users to insert sounds onto their Web page. To insert a sound:

1. Click on **Format** in the Menu bar and choose **Behaviors**.
2. Click on **Insert** in the Behaviors Task Pane and choose **Play Sound**.
3. Browse to where your file is located.
4. Click **OK**.

## Popup Message

---

Popup messages can be useful to convey important information to Web site visitors. You could use a Popup message to display legal information, new announcements, or advertisements. To insert a Popup Message:

1. Click on **Format** in the Menu bar and choose **Behaviors**.
2. Click on **Insert** in the Behaviors Task Pane and choose **Popup Message**.
3. Type in the message.
4. Click **OK**.

## Preload Images

---

Sometimes certain images on a page will load before others. It may be critical to the usability of your Web page to have all of the pictures load at once. FrontPage contains a Behavior function to have all of your pictures load at once. To establish this behavior:

1. Click on **Format** in the Menu bar and choose **Behaviors**.
2. Click on **Insert** in the Behaviors Task Pane and choose **Preload Images**.
3. Browse to the location of the picture.
4. Click the **Add** button.
5. Repeat this process until all pictures have been added.
6. Click **OK**.

## Swap Image

---

Behaviors can also add effects and interactivity to your Website. You can use the Behavior function called Swap Image to have a picture change into a different one. The action can be executed on a mouse click, mouse over, etc. To insert the swap image behavior:

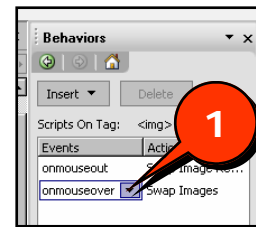
1. Inside of FrontPage, select the picture to be swapped out.
2. Click on **Format** in the Menu bar and choose **Behaviors**.
3. Click on **Insert** in the Behaviors Task Pane and choose **Swap Image**.

- Browse to the new picture you want swapped in for the old one.
- Click **OK**.

To edit when the picture is swapped:

- Select the picture that is being swapped out.
- In the Behavior Task Pane, click on the drop down arrow under Events (**Figure 3, 1**).
- Choose when you would like the action to take place.

Figure 3



## Swap Image Restore

This function is opposite of the Swap Image tool. With this Behavior, you can have the original picture reappear. For example, you can set up a Behavior to have a picture be swapped out on mouse over. You can then establish another behavior, a Swap Image Restore, and have the picture return on mouse out. To setup a Swap Image Restore:

- Inside of FrontPage, select the picture to be restored.
- Click on **Format** in the Menu bar and choose **Behaviors**.
- Click on **Insert** in the Behaviors Task Pane and choose **Swap Image Restore**.
- Click **OK**.



You must have a Swap Image setup first in order for the Swap Image Restore to work correctly.

## Delete a Behavior

To remove a Behavior from your Web page:

- Right-click on the Behavior in the Behaviors Task Pane under Actions.
- Left-Click on Delete.



You must Right-Click under Actions to remove the Behavior. A right-click under Events will bring up the options for when to execute the Behavior.

Figure 4

