



# Center for GIS at Towson University

## **Making GIS accessible and relevant**

A geographic information system (GIS) helps you make better decisions by letting you map and analyze spatial data to see relationships, patterns, and trends.

The Center for GIS (CGIS) helps government, businesses, and non-profit organizations gain cost-effective access to the power of GIS technology.

### ***Enterprise GIS Solutions***

Integrating disparate data, systems, and applications

### ***Geospatial Web Development and Hosting***

Creating and hosting map-enabled Web applications

### ***Desktop GIS Development***

Creating customized GIS applications

### ***Geospatial Database Development and Analysis***

Collecting, consolidating, and analyzing data

### ***Client Site Support***

Augmenting client staff with on-site GIS expertise

### ***Custom Cartography***

Creating paper maps and posters

### ***GIS Training as an ESRI Authorized Partner Education Center***

Teaching introductory and advanced GIS skills

**CGIS applies GIS technology  
to strategic opportunities and  
tactical challenges.**



*Thinking Outside*

## Sometimes, a map is worth a thousand spreadsheets.

Here are some of the ways CGIS uses GIS to enhance organizational productivity and efficiency.

### *CGIS integrates data, systems, and applications.*

- airport engineering information management
- transit administration environmental compliance and management

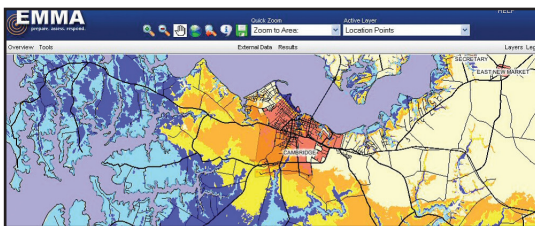
### *CGIS creates and hosts map-enabled Web and desktop applications.*

- coastal, flood, and island habitat environmental management and sustainability
- emergency management
- government real property sales
- sex offender registry mapping
- environmental compliance

### *CGIS collects, digitizes, maps, and analyzes data.*

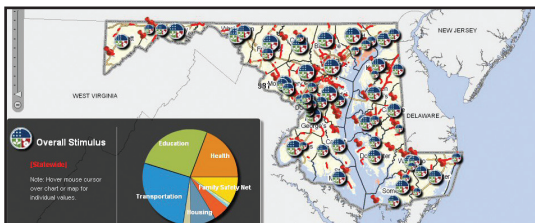
- statewide emergency and environmental hazard analysis and assessment
- traffic incident and crash reporting
- K-12 school performance and achievement metrics

### *CGIS licenses EMMA, the Emergency Management Mapping Application.*



EMMA enables responders to identify, visualize, analyze, and manage emergency incidents.

### *CGIS helps Maryland coordinate and share GIS.*



CGIS architected and hosts the infrastructure for MD iMap, the State's vision for shared, accessible data through services and mapping tools.

### Contact Us

8000 York Road  
Towson, Maryland 21252  
v.410.704.3887 | f.410.704.3888  
cgis@towson.edu  
www.cgis.towson.edu



Thinking Outside