

# HARFORD COUNTY WOMEN'S CONFERENCE

## 2010 ECONOMIC OUTLOOK *HUMP DAY*



*Regional Economic Studies Institute*

Raquel Huevo  
RESI of Towson University

# A Look Back...

GDP

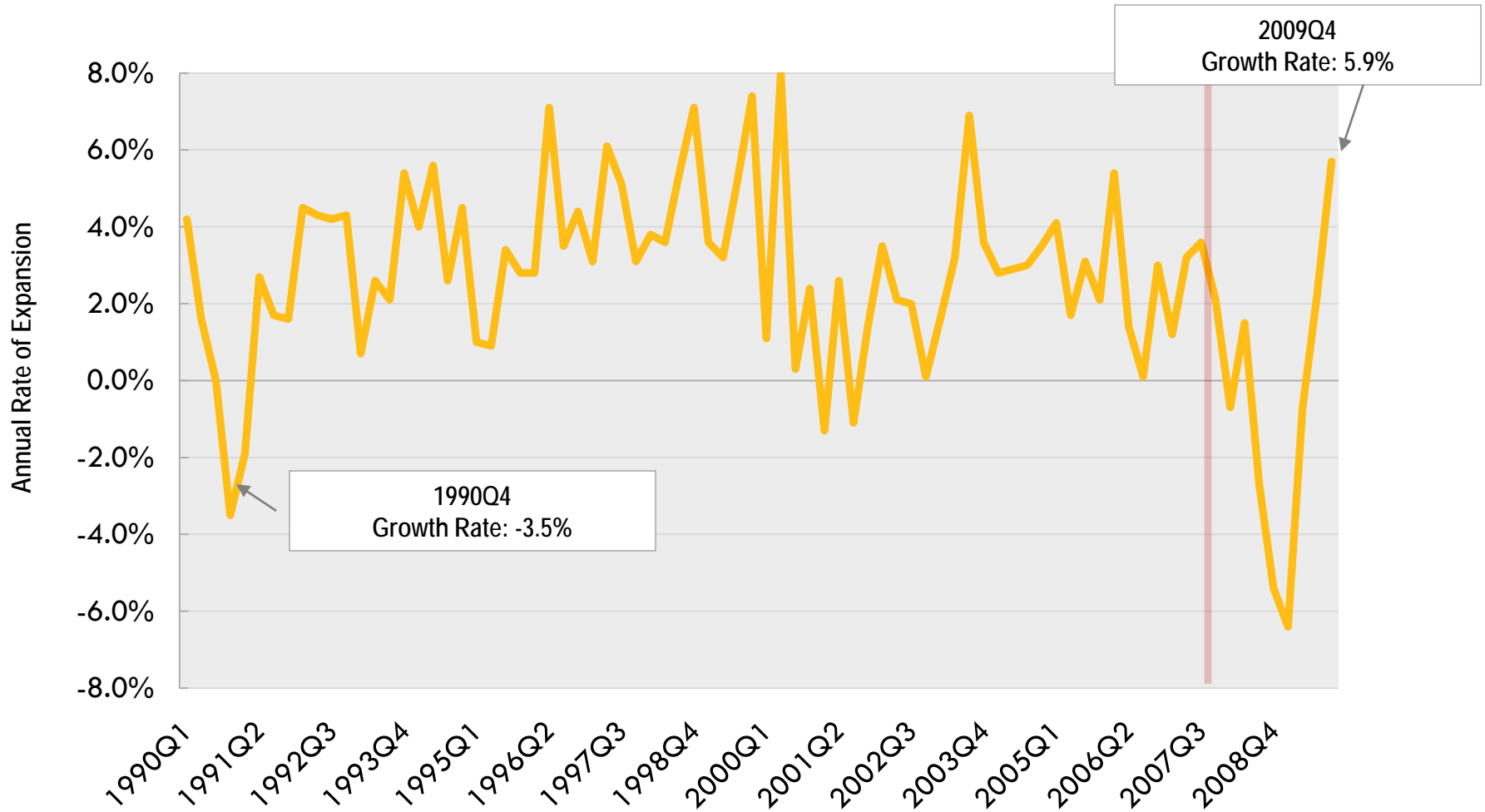
Consumers

Housing

Employment

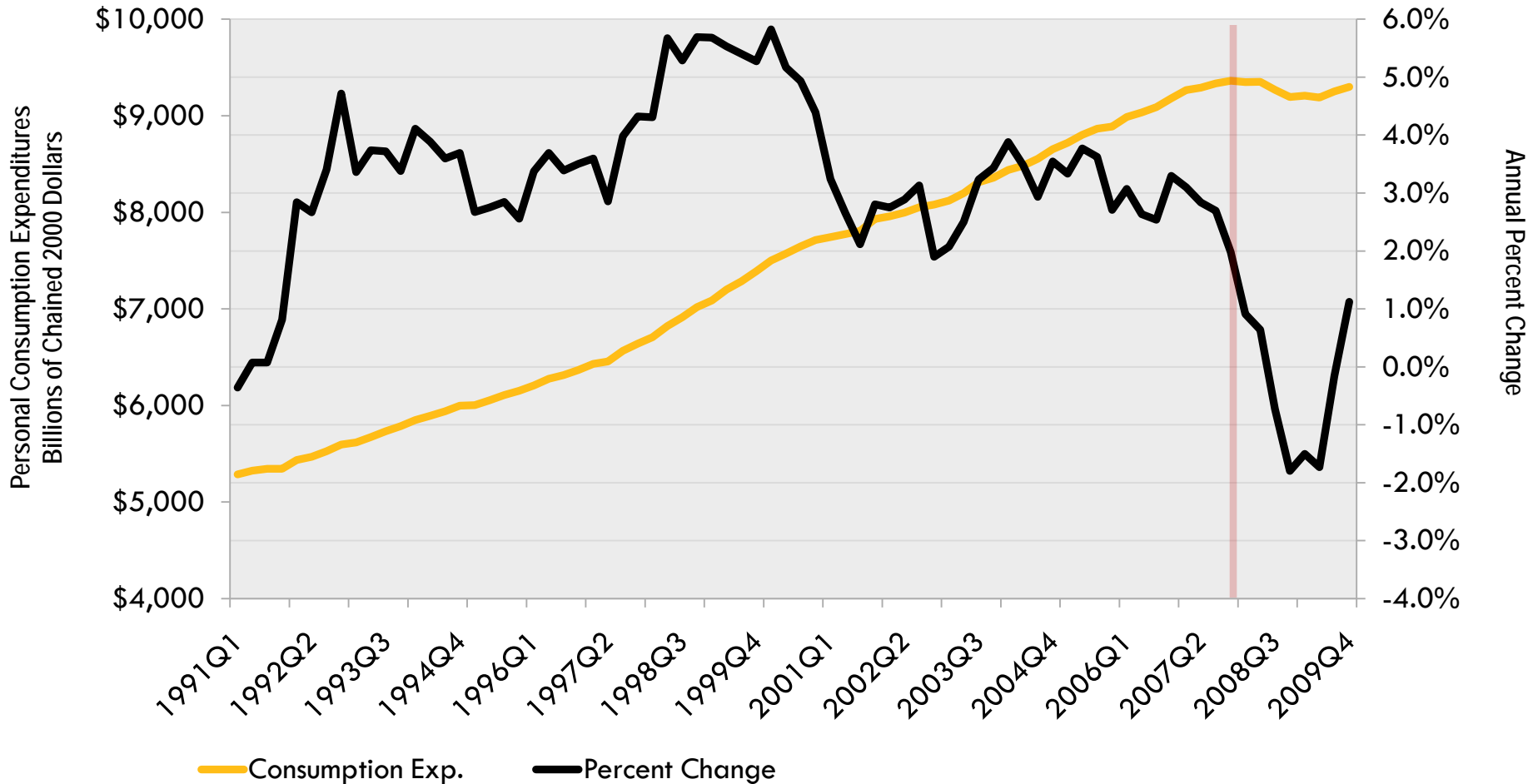
# US Gross Domestic Product

Real Gross Domestic Product, Seasonally Adjusted 1990Q1 through 2009Q4



# Real Personal Consumption Expenditures

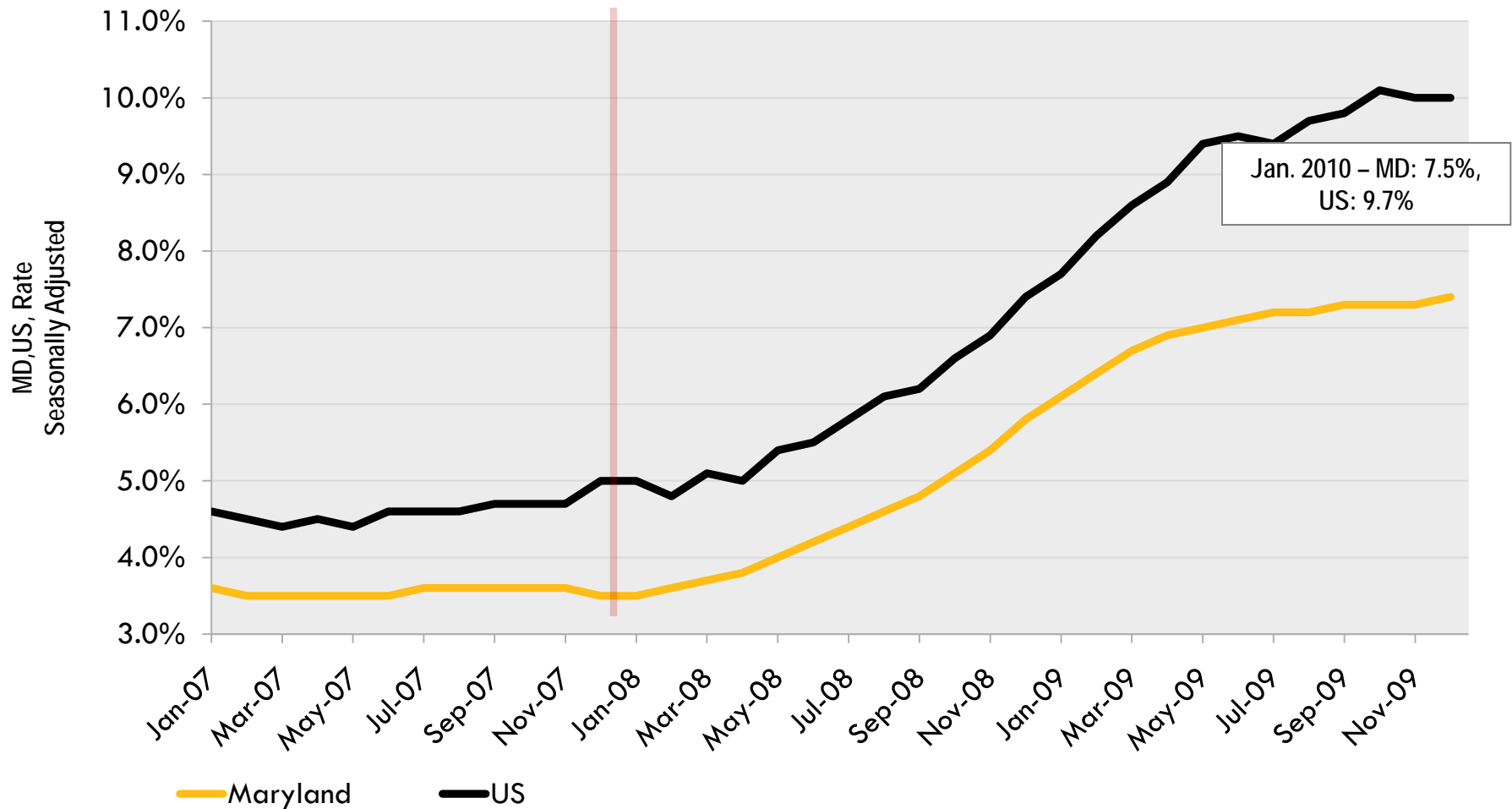
Quarterly Seasonally Adjusted, 1991Q1 through 2009Q4





# Unemployment Rate

January 2007 through January 2010







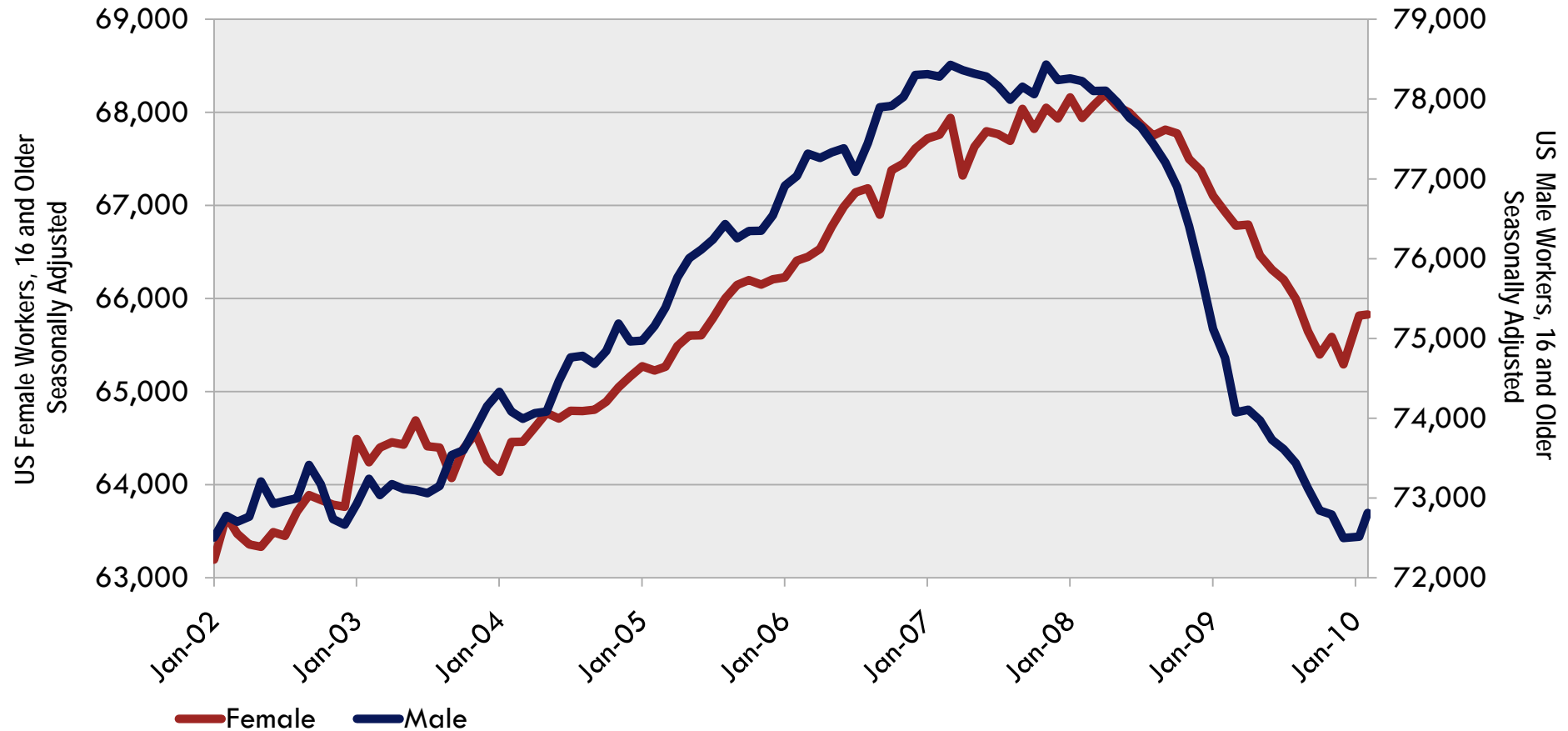
# *A Mancession?*

Employment Levels by Gender

Unemployment Rate by Gender

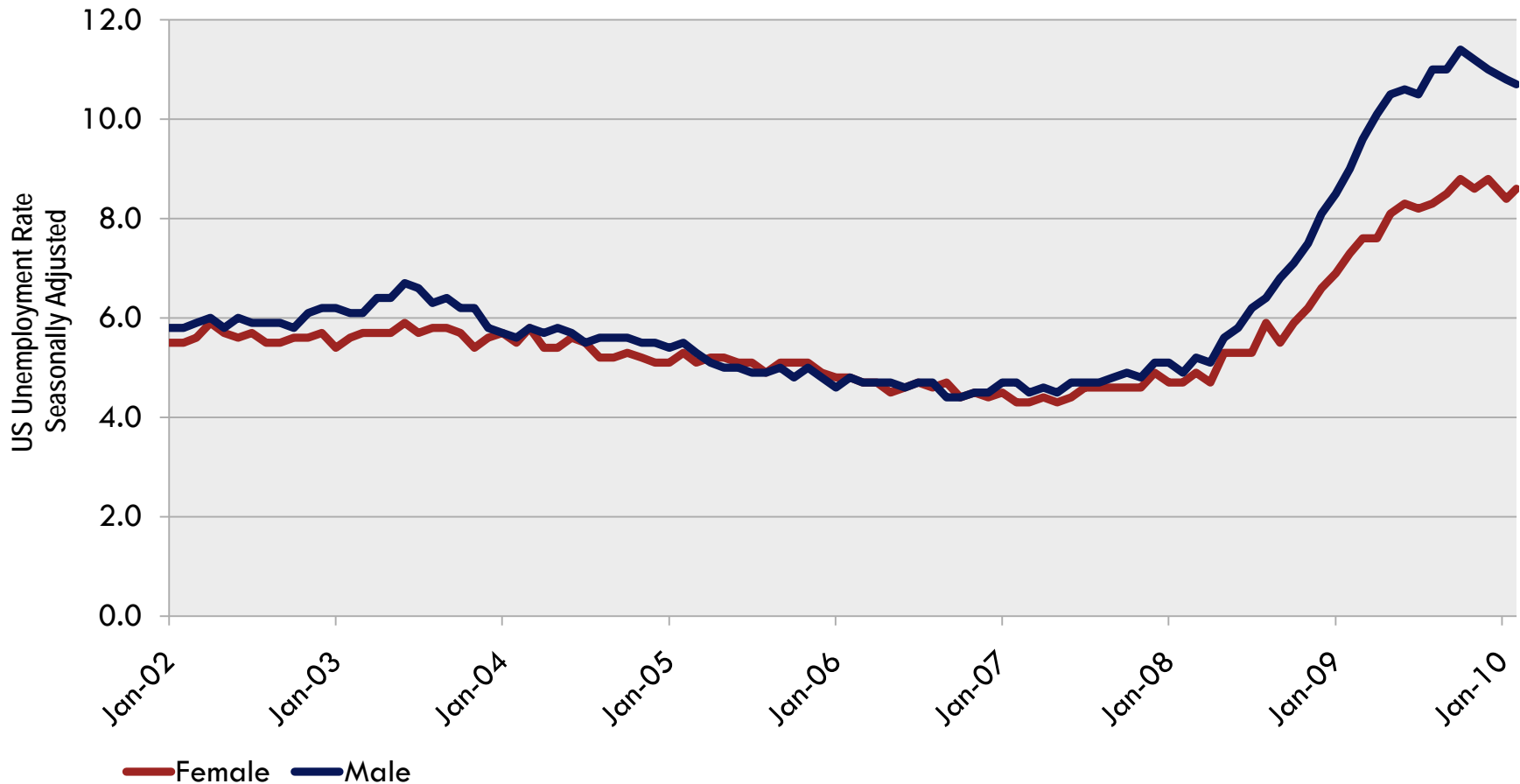
# Male VS Female Employment Levels

January 2002 through January 2010, Ages 16 and Up



# Male VS Female Unemployment Rate

January 2002 through January 2010, Ages 16 and Up



# Signs of Life

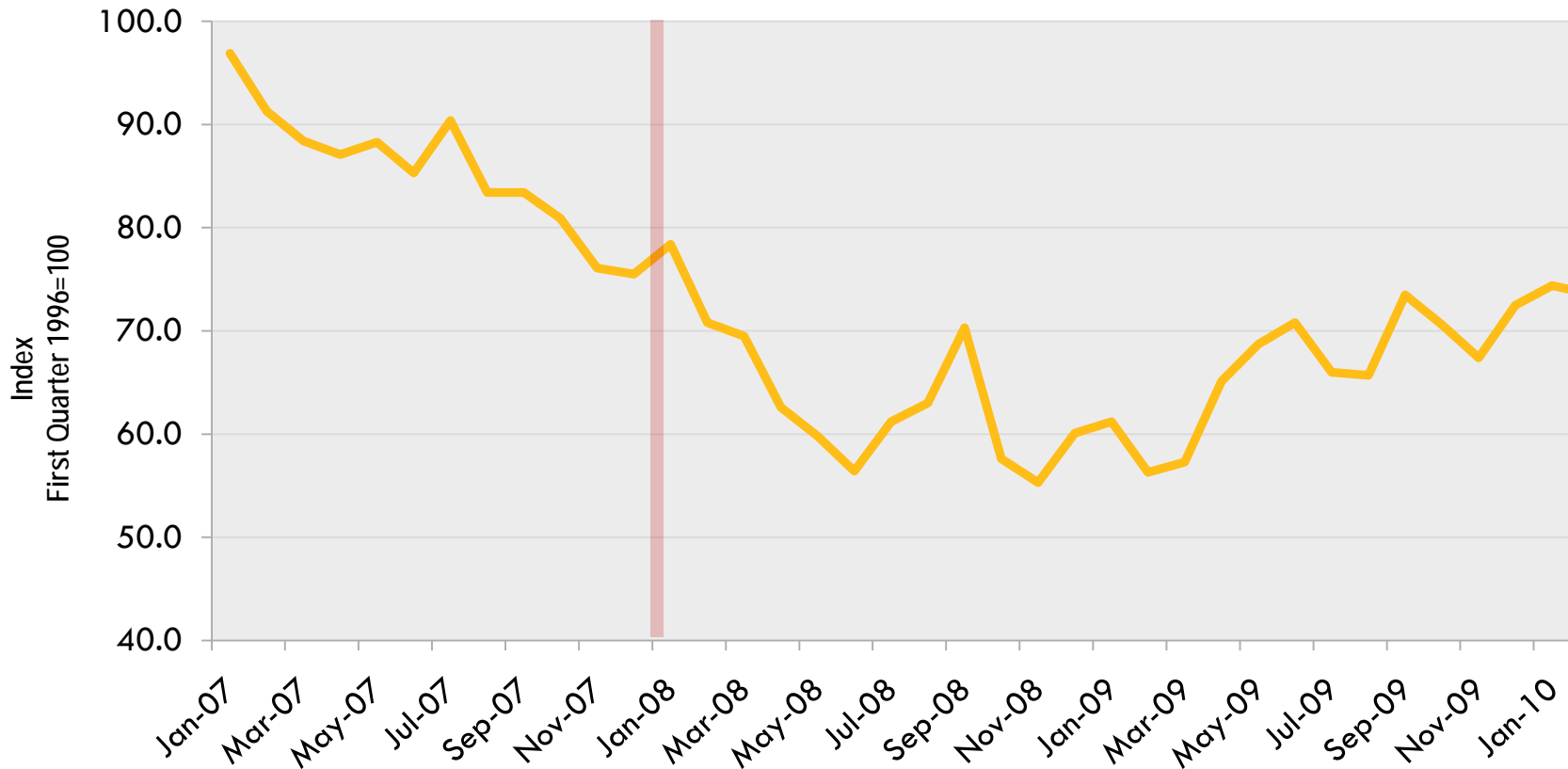
Consumer Sentiment

Temporary Help Services

Manufacturing and Services Activity

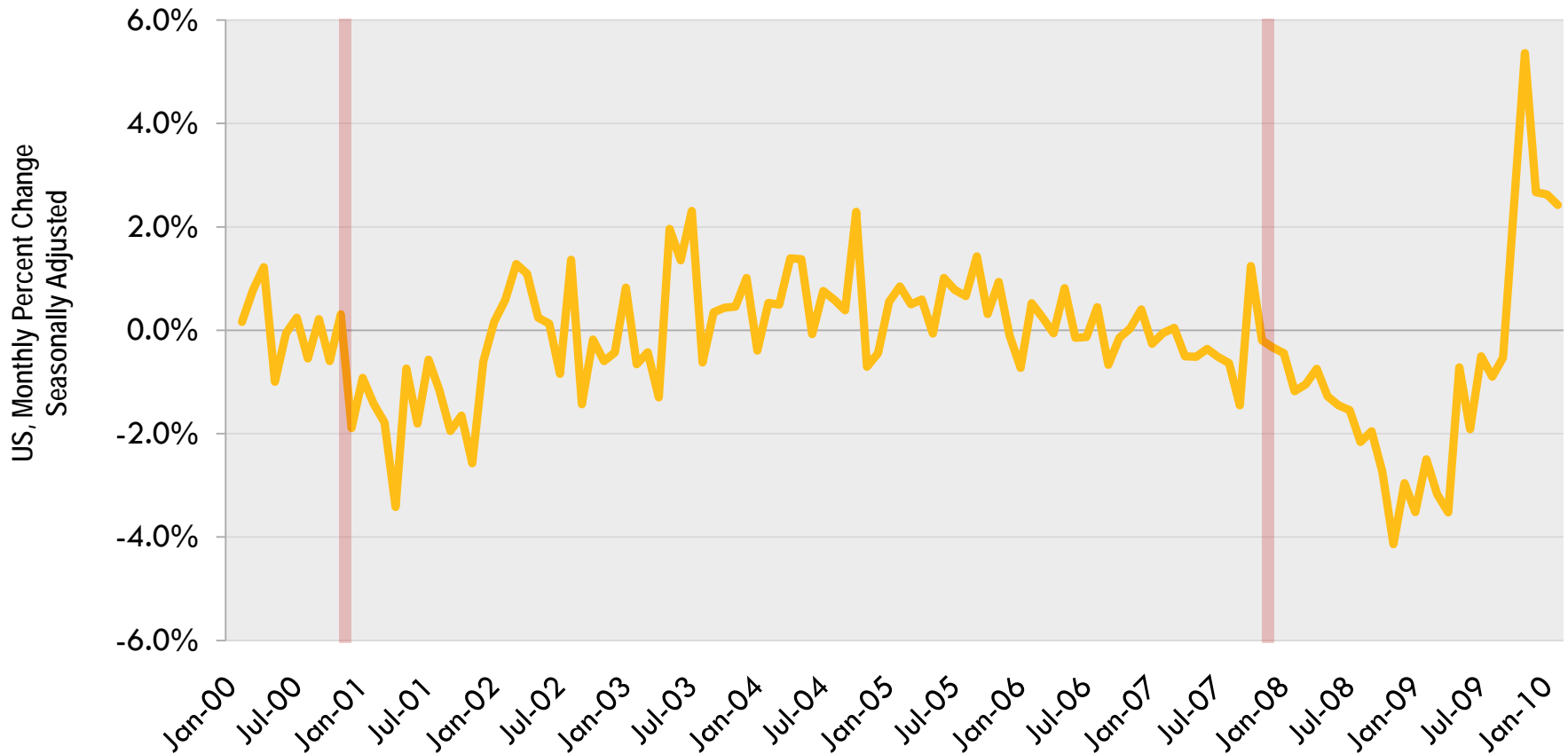
# Consumer Sentiment Index

Monthly Index, January 2007 through February 2010



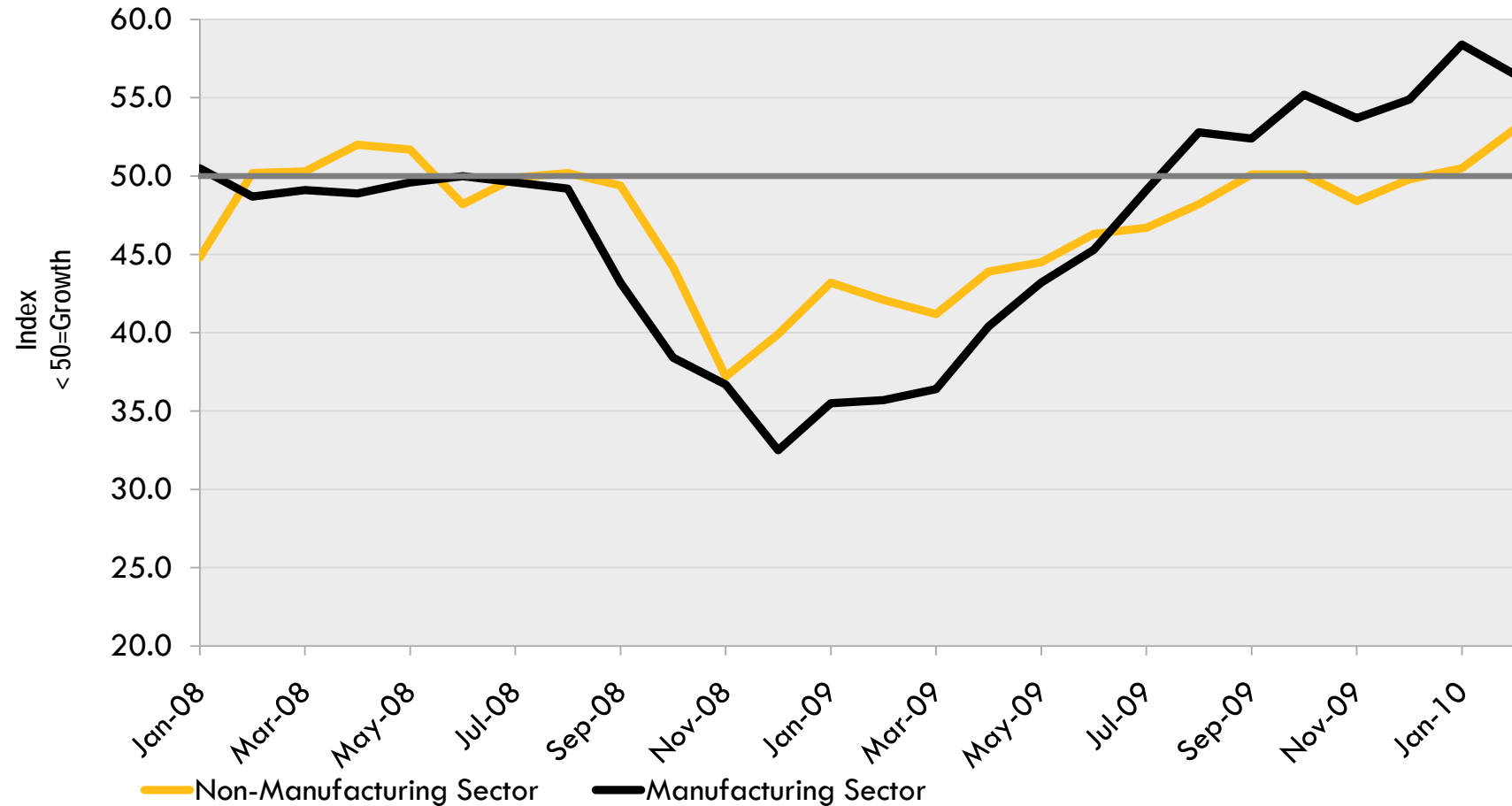
# Temporary Help Employment Services

Temporary Help Services, Seasonally Adjusted January 2000 through February 2010



# Institute of Supply Management Index

Monthly Index, January 2009 through February 2010



# Checking the Local Picture...

State and County Unemployment

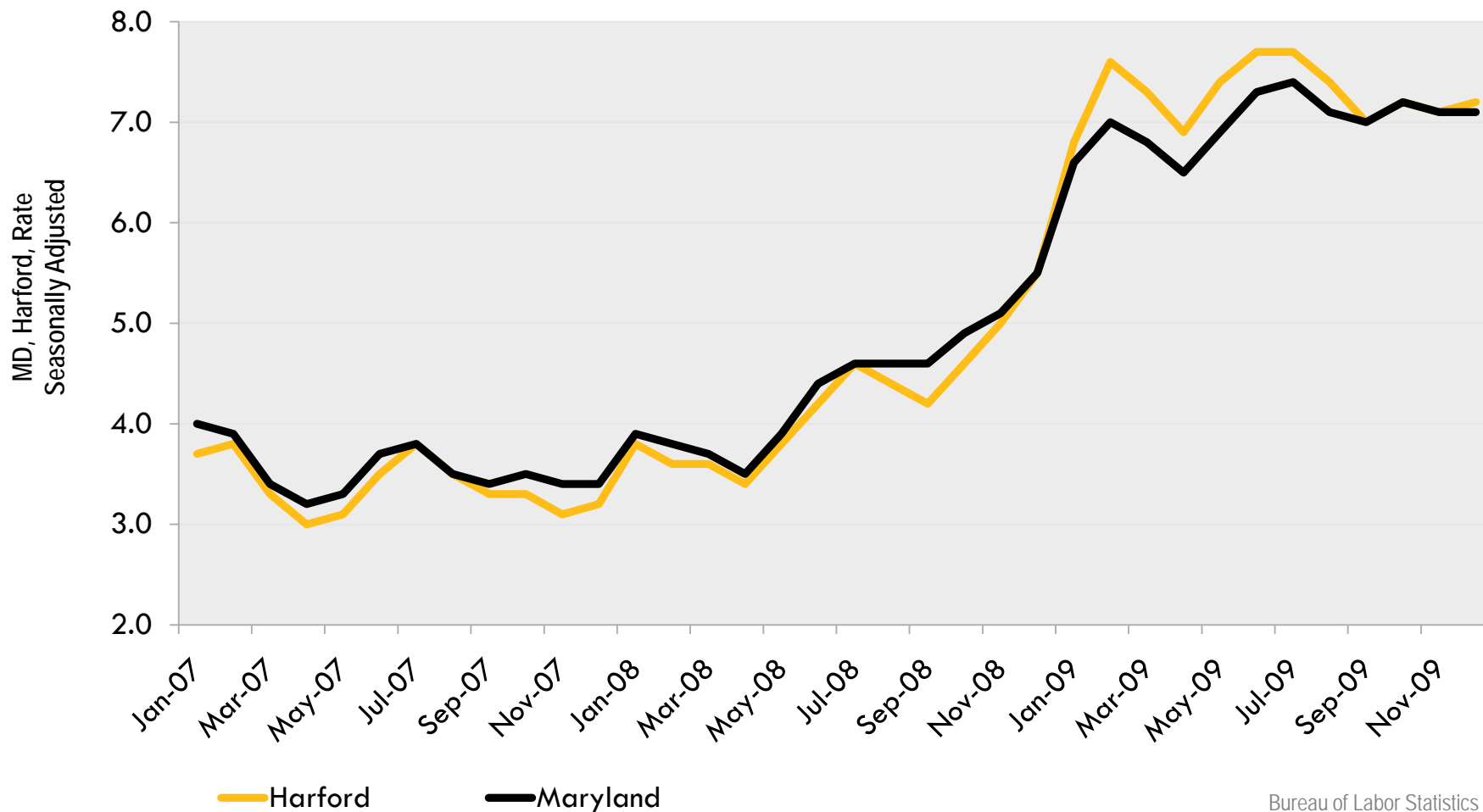
Housing

Income Growth



# Unemployment Rates

January 2007 through December 2009



# How does Harford Compare?

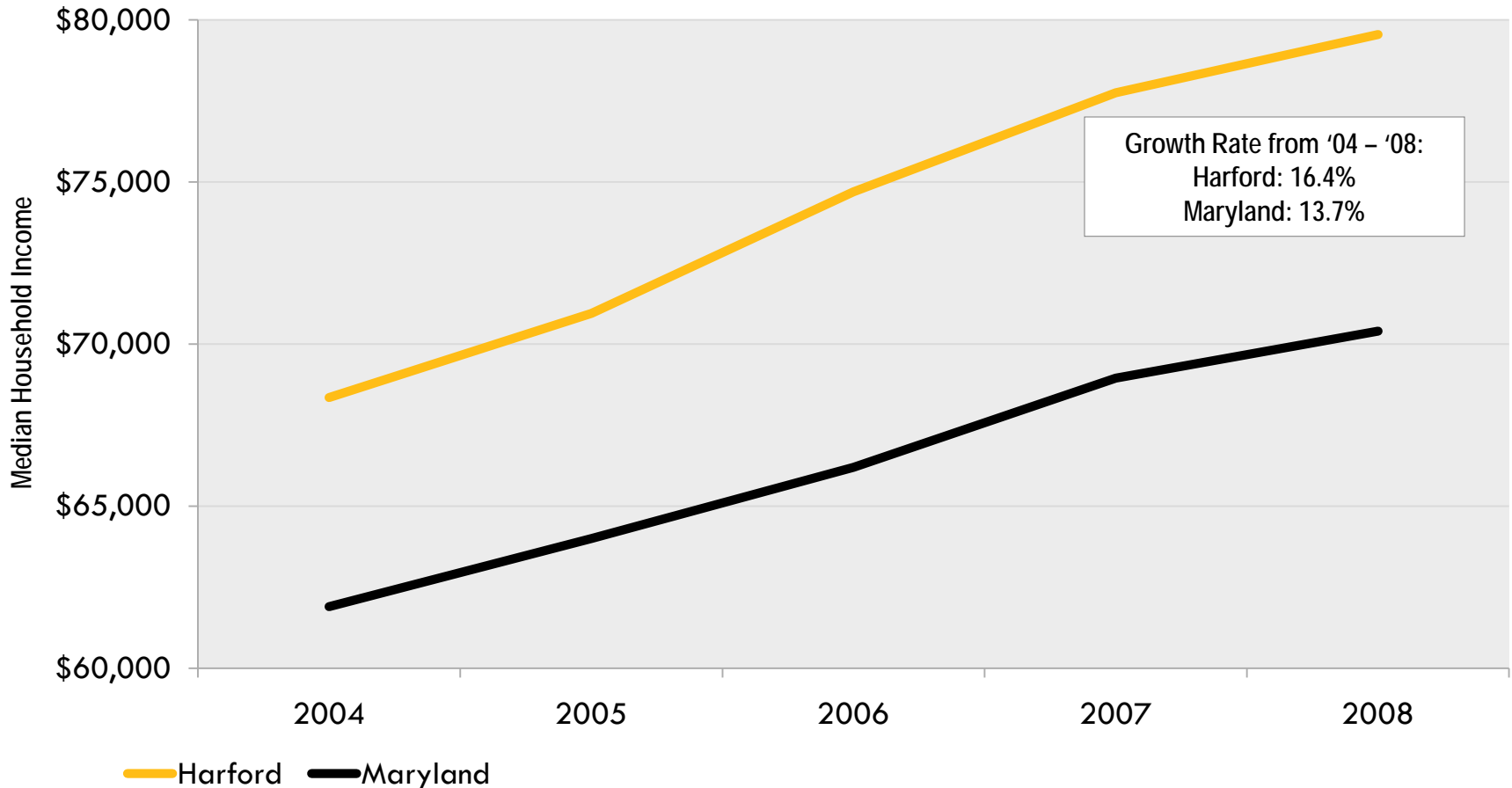
Local Unemployment Rates December 2009		
Rank	County	Percent
1	Howard	5.1
2	Montgomery	5.2
3	St. Mary's	5.7
4	Calvert	5.9
5	Charles	6.0
6	Frederick	6.1
7	Anne Arundel	6.5
8	Carroll	6.5
9	Queen Anne's	6.9
10	Harford	7.2
11	Prince George's	7.2

# Harford County Employment and Payrolls

<b>Industry/Sector 2009Q3</b>	<b>Quarterly Avg. Employment</b>	<b>Average Weekly Wage per Worker</b>
Total Employment	78,611	\$834
Federal Gov't	8,861	\$1,689
State Gov't	457	\$808
Local Gov't	6,750	\$976
Construction	5,338	\$845
Manufacturing	4,334	\$1,020
Trade, Transport.	17,777	\$583
Information	584	\$1,034
Financial Activities	3,155	\$737
Professional Srvs.	9,657	\$1,007
Education Srvs.	9,583	\$797
Leisure and Hospit.	9,278	\$269
Other Services	2,624	\$551

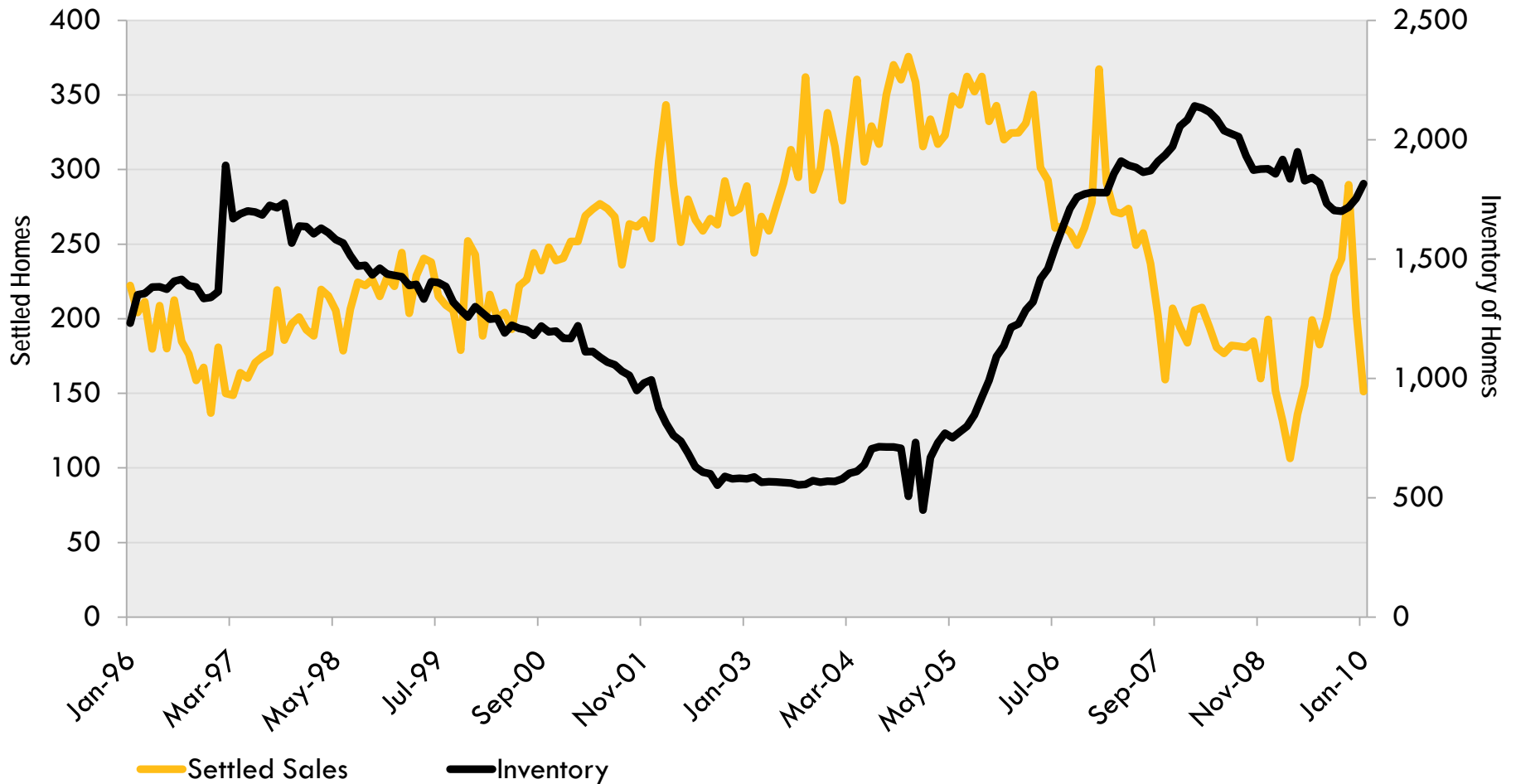
# Median Household Income

Years 2004 through 2008



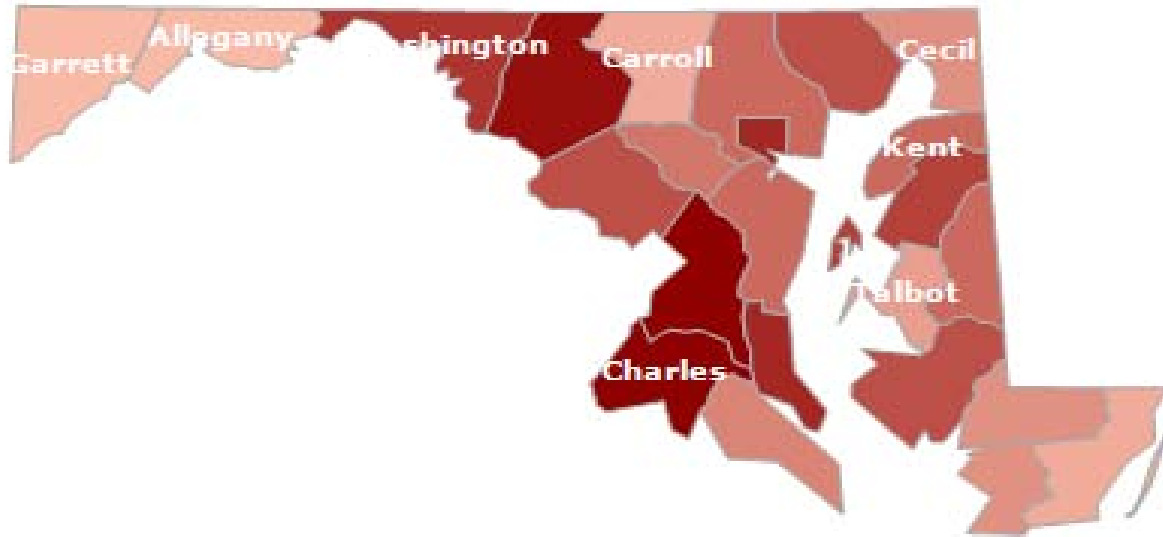
# Harford County Housing Market

January 1996 to January 2010



# MD Foreclosure Activity

February 2010



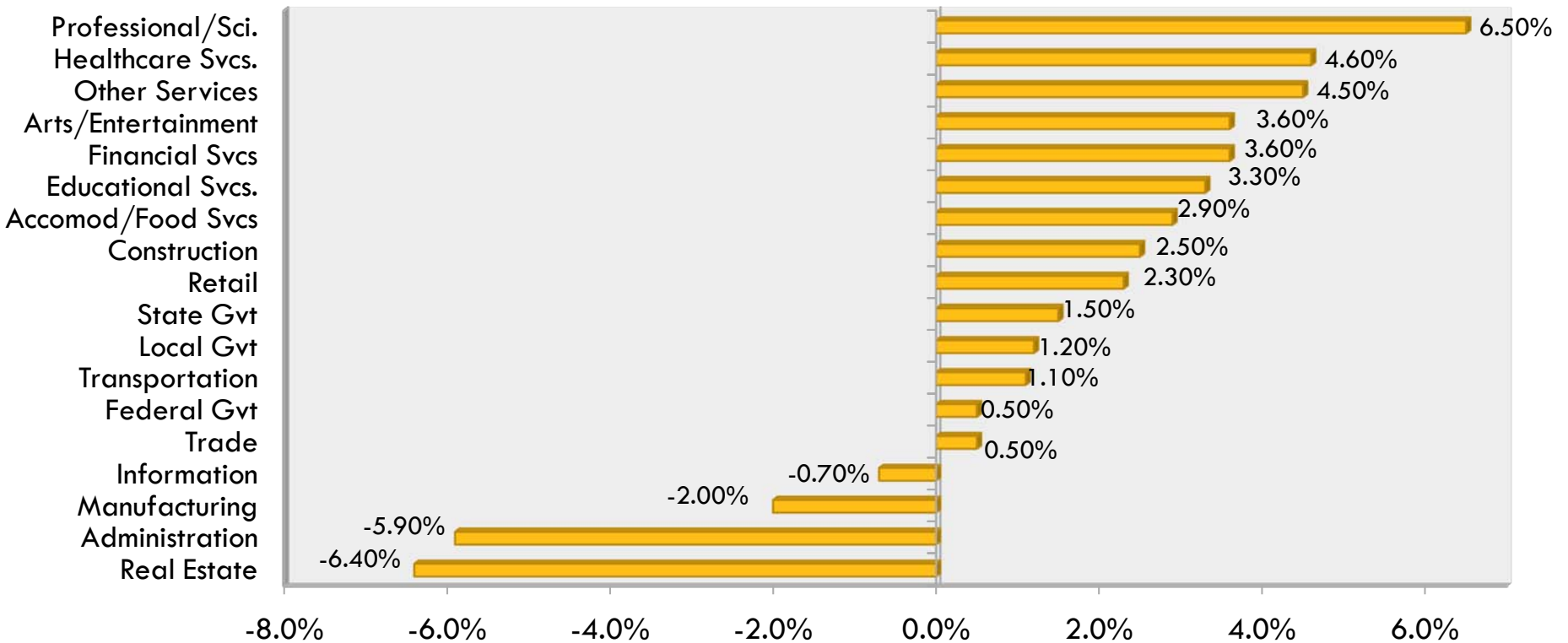
High  Low

# A Look Ahead...

RESI Employment and Industry Forecasts

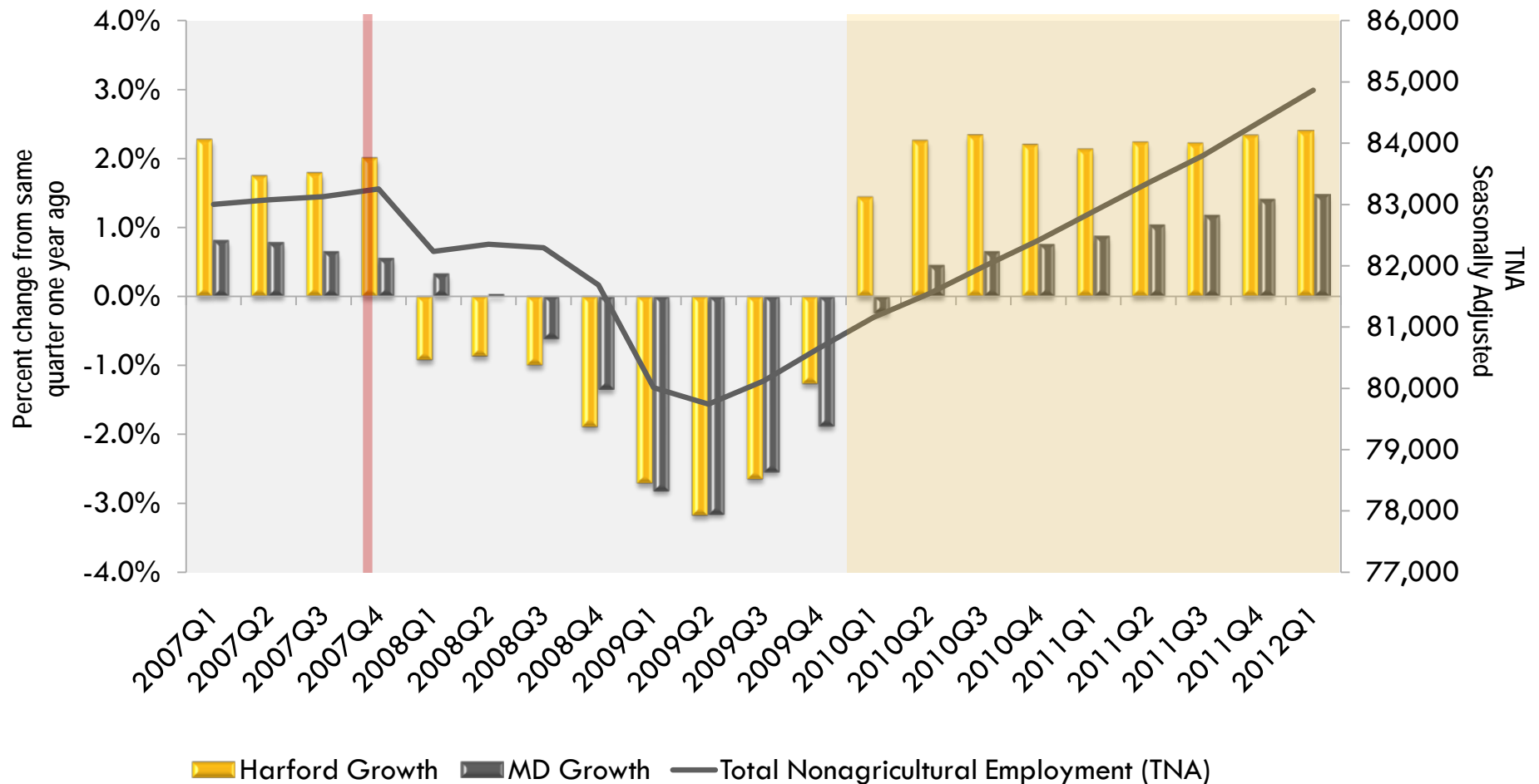
# RESI Industry Employment Outlook

## Harford County Projected Employment Growth, 2009 through 2010



# RESI Total Employment Outlook

Harford Historical & Projected Total Nonagricultural Employment, 2007Q1-2012Q1



# RESI Outlook - Summary

## Maryland and Harford County Indicators - Historical & Projected Annual Figures

	2008	2009	2010	2011	2012
Harford TNA Employment (annual growth)	-1.2%	-2.4%	2.1%	2.2%	2.6%
Maryland TNA Employment (annual growth)	-0.4%	-2.6%	0.4%	1.1%	1.6%