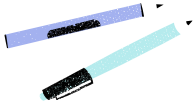


Supply Chain Management B.S./M.S. Student Checklist



1.

Do I qualify for the B.S./M.S.
Accelerated Program?

A Business related major in CBE and/or Business Analytics minor?

At least 12 credits completed at TU? (Transfer students)

At least 60 undergraduate credits?

A 3.0 or higher overall GPA?



2.

Apply for the Accelerated
Program!

Fill out the Accelerated B.S./M.S. Application Form (PDF) and submit it to supplychain@towson.edu or the Business Analytics and Technology Management Department in Stephens Hall, Room 301.



3.

Enroll in Accelerated Courses

Meet with Supply Chain Program Director to identify 6-9 replacement course credits and pathway options.

Complete DocuSign to confirm intent (must be approved by 1st day of the semester)

Enroll in accelerated courses by assigned deadline

Additional Information

- GRAD courses must be completed with a grade B or higher for GRAD credit.
- Only course units and credits will transfer to graduate record. (Not grades)
- A C Grade or GPA below 3.0 may disqualify you from taking additional graduate courses.
- Admission to the M.S. program is not guaranteed and is a separate application.