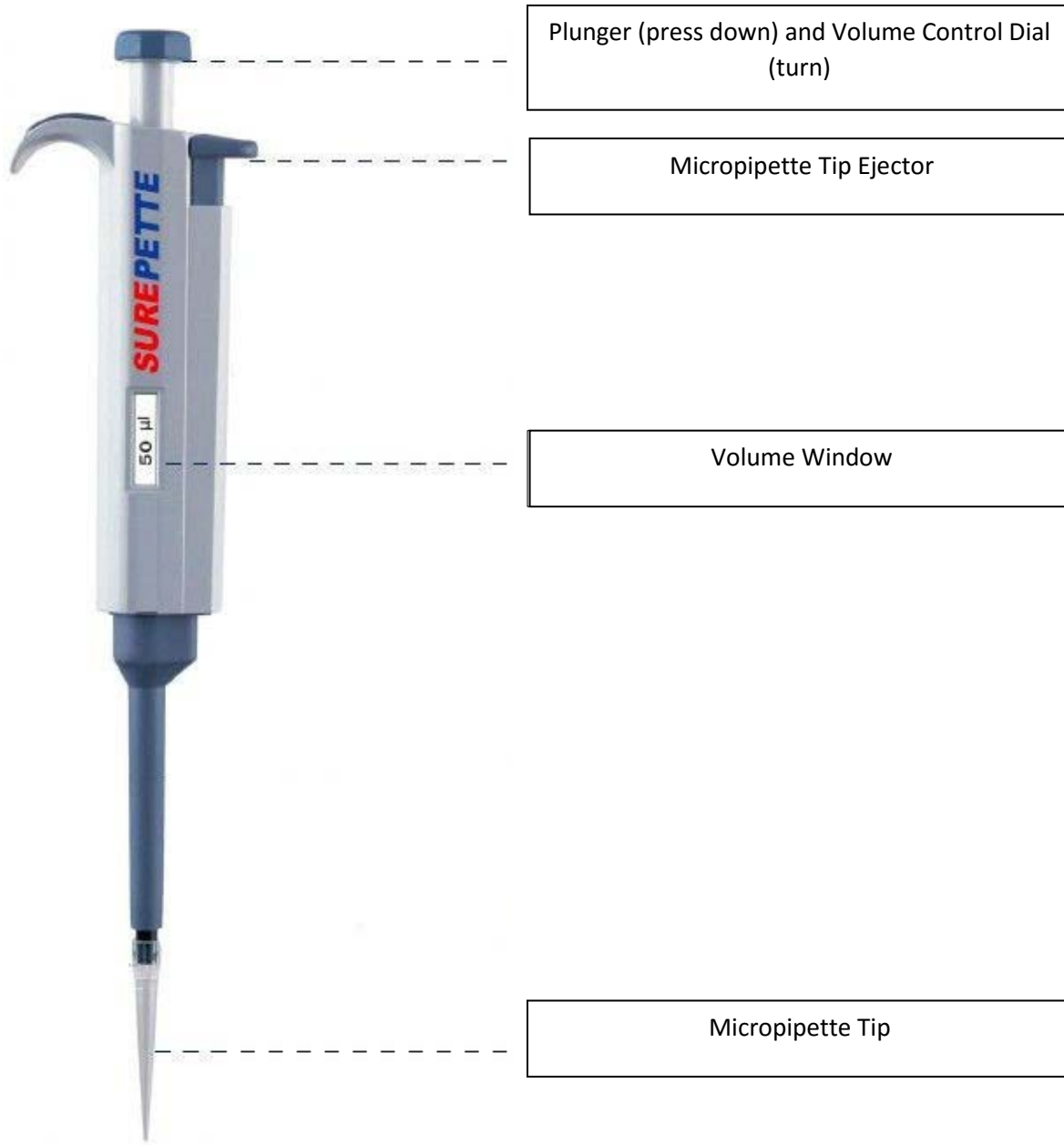


Micropipette Basics

1. Parts of a Micropipette



2. How to Use a Micropipette

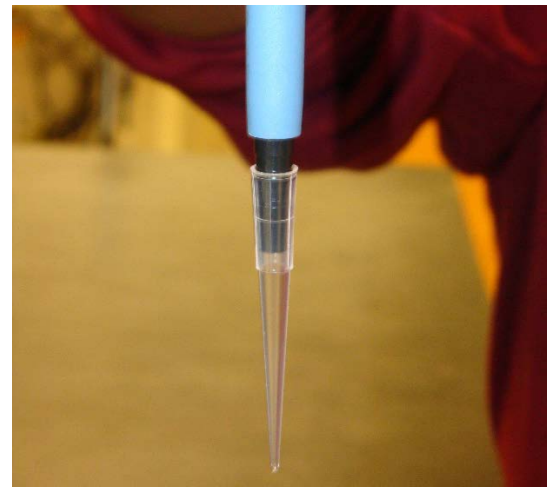
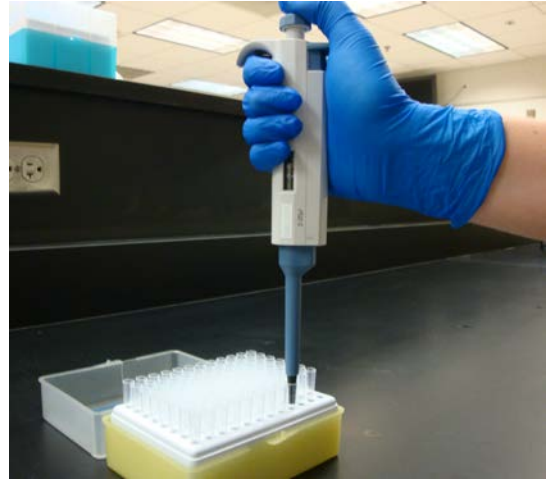
1. Set the micropipette to the volume needed by turning the plunger. Be aware of the volume range for the micropipette you are using (i.e., 100 μ l – 1000 μ l); the volume in the volume window should never be below the lowest number or higher than the highest number because the micropipette will break.



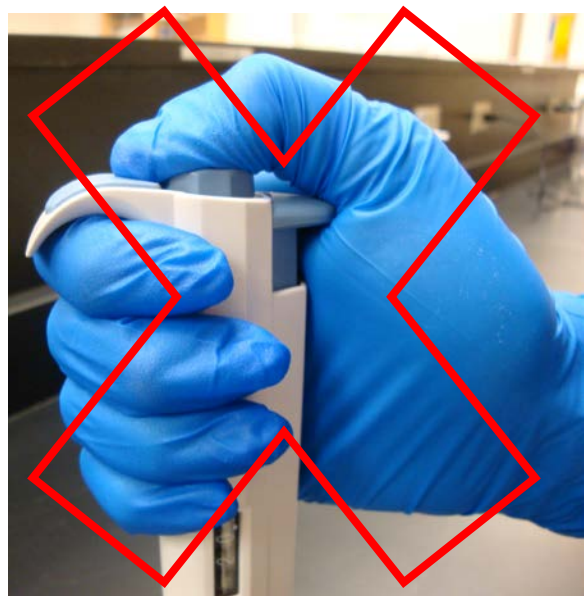
2. Hold the micropipette in the hand that you write with with your thumb on the plunger. Micropipettes should always be held vertically.



3. You will need to use a micropipette tip on the end of your micropipette. Micropipette tips should not be touched even with gloves on to prevent contamination. Open your micropipette tip box lid without touching the micropipette tips inside the box. Holding your micropipette vertically, choose a micropipette tip and **GENTLY** press the micropipette down into the micropipette tip. There will be a space between the micropipette and the micropipette tip. Close the lid to the micropipette tip box to prevent contamination of the unused micropipette tips.



4. Press down on the plunger **SLOWLY** with your thumb until the plunger stops on its own. This is the first stop. Be careful not to press down all the way.



5. With your thumb still pressed down on the first stop, lower your micropipette tip (only the plastic part) into the liquid or sample you are working with.



6. With your micropipette tip in the liquid/sample, release your thumb slowly. The liquid/sample should rise into the micropipette tip without any bubbles.



7. Release the liquid/sample by pressing your thumb down on the plunger all the way (this is the second stop). You may need to press your thumb up and down on the plunger to get all of the liquid/sample out of the micropipette tip.



8. Your micropipette tip cannot be used again! Eject your used micropipette tip into a waste container by pressing on the micropipette tip ejector button. If your micropipette tip does not easily fall into the waste container, twist the micropipette tip off with your gloved fingers and place the micropipette tip into the waste. Be careful not to press down on the ejector button too hard; this will cause the micropipette to break apart.

