

# How to Identify Your Computer Model

Often the computer model is on the front of the computer or on the inside of a laptop. If you cannot find it there, you can get it in other ways.

## Windows Computers

Another way to find the computer model is with the Towson University System Information application.

1. Open the Windows menu and search for “Towson University System Information”, or, open the Towson University System Information application on the menu (Image 1).
2. Look to the Asset Records section in the top right of the application for the computer model (Image 2).

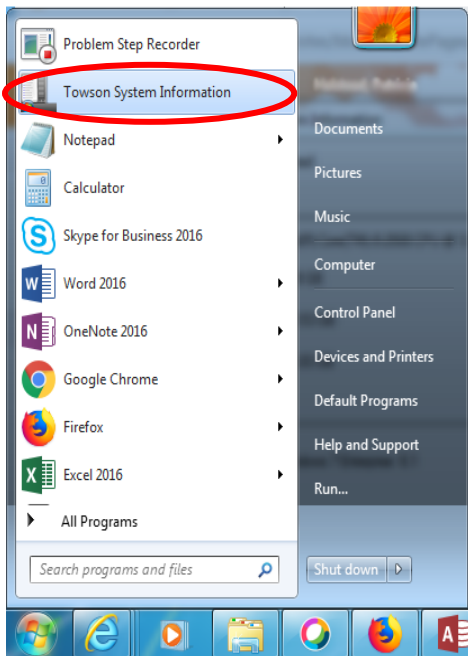


Image 1

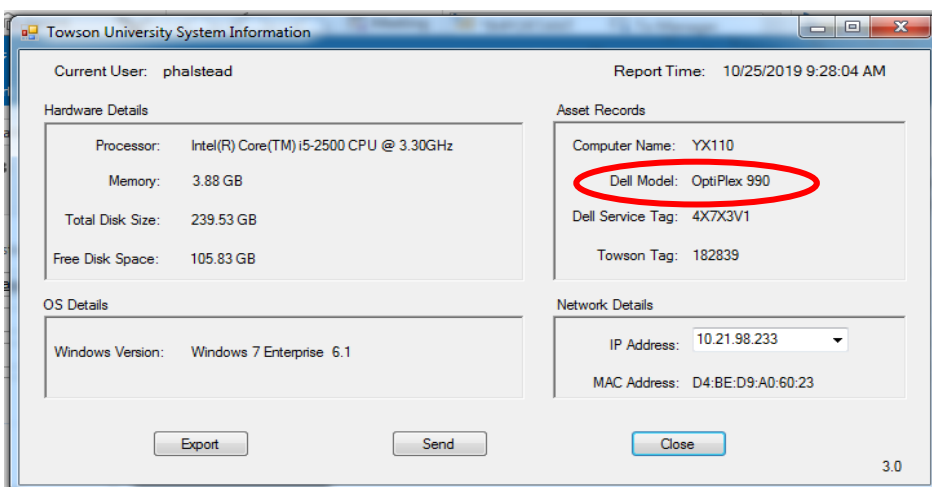


Image 2

## Apple Computers

You can find your computer model information in About This Mac.

1. Select the Apple Menu in the corner of your screen. (Image 1)
2. Open *About This Mac* to see an overview of your Mac, including the model name. (Image 2)

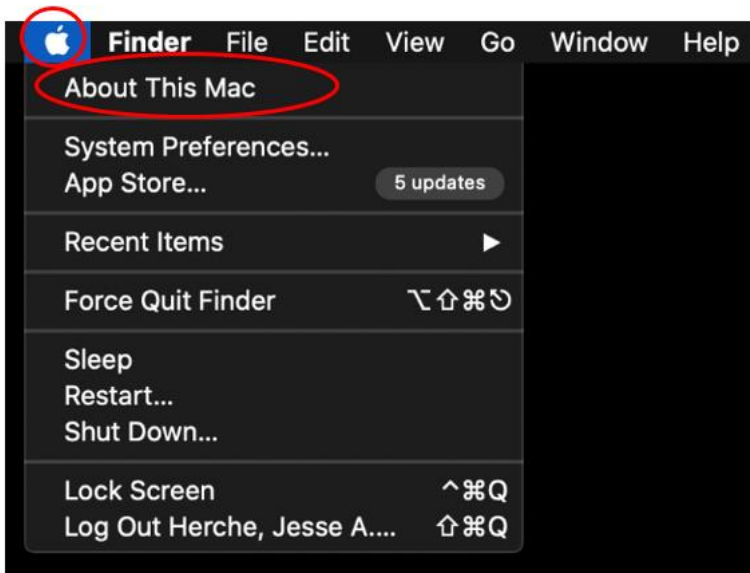


Image 1



Image 2