

TigerWeb

Stand Alone Website Connection Information

Introduction

TigerWeb is a simple HTML-based site that allows use of any web publishing applications and is primarily for personal use. TigerWeb is available for students, faculty and staff and can be requested by logging into <https://tigerweb.towson.edu>.

Activating your Tigerweb site

1. Using your preferred web browser, navigate to <https://tigerweb.towson.edu> and click on the **Go To TigerWeb Portal** button.

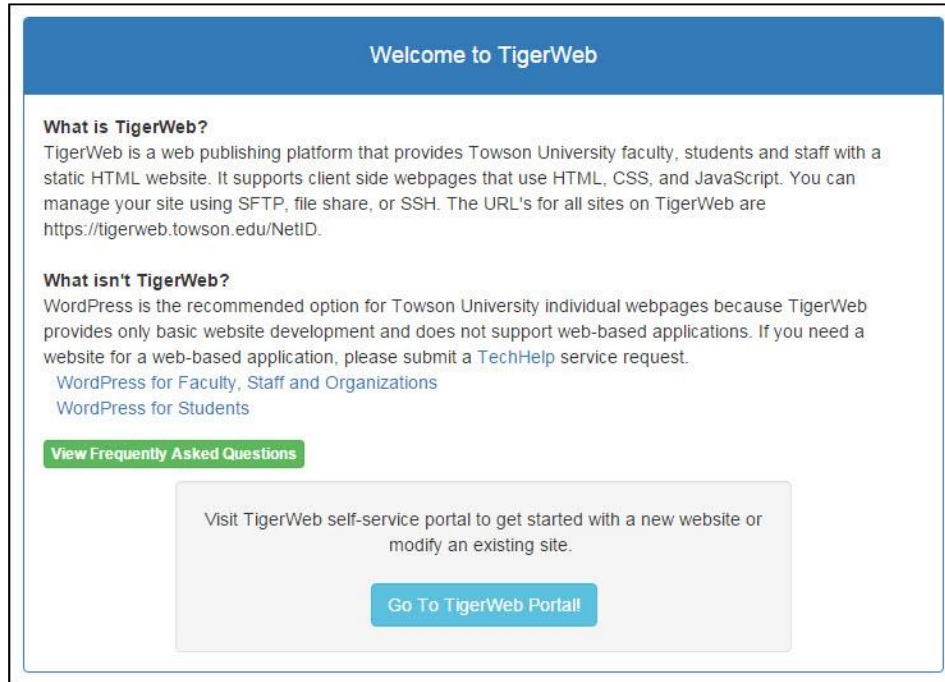


Figure 1

2. Sign in with your TU NetID and password, then click **Login**.

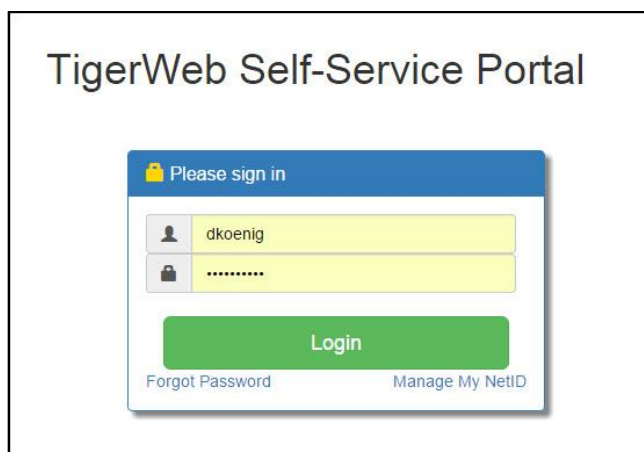


Figure 2

TigerWeb: Stand Alone Website Connection Information

3. Click **Activate Website**.

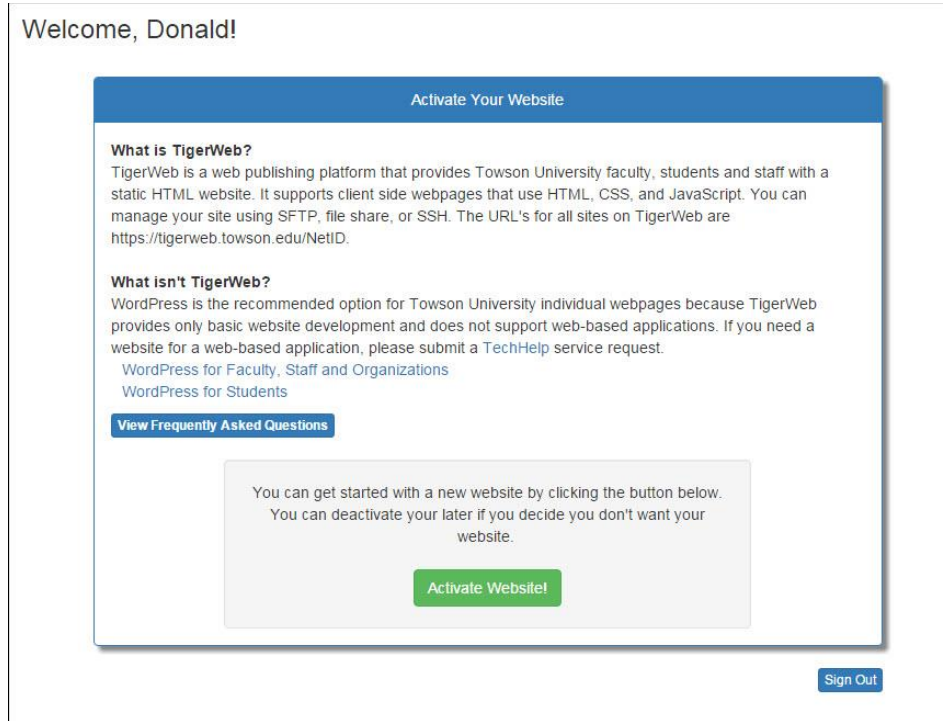


Figure 3

4. Your website is now active. Click on **File Upload**, **File Share** or **Terminal Access** to review the options for accessing your website content.

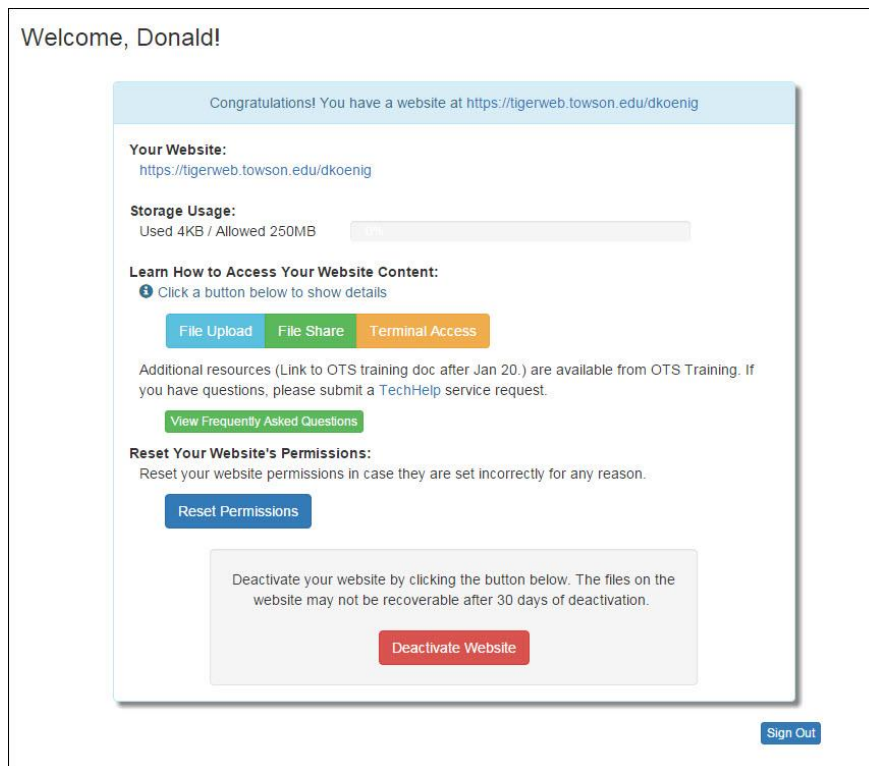


Figure 4

Note: The Reset Permissions button can be used in troubleshooting permissions with your site.

Connecting to TigerWeb

Connecting to TigerWeb Using Dreamweaver

1. Launch Dreamweaver.
2. From the **Site** menu, select **Manage Sites**. The **Manage Sites** window will appear.

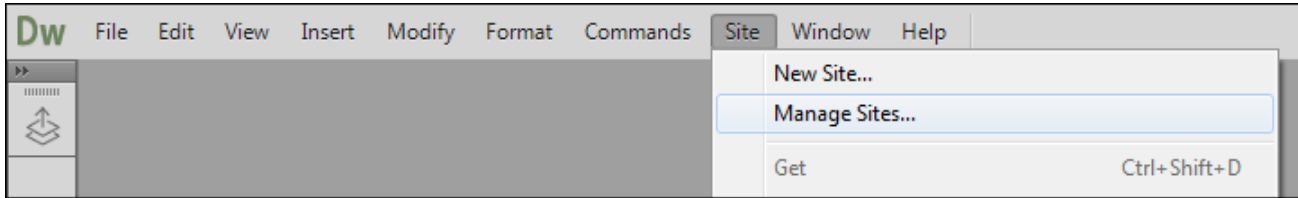


Figure 5

3. In the **Manage Sites** window click **New Site**. The **Site Setup** window will appear.

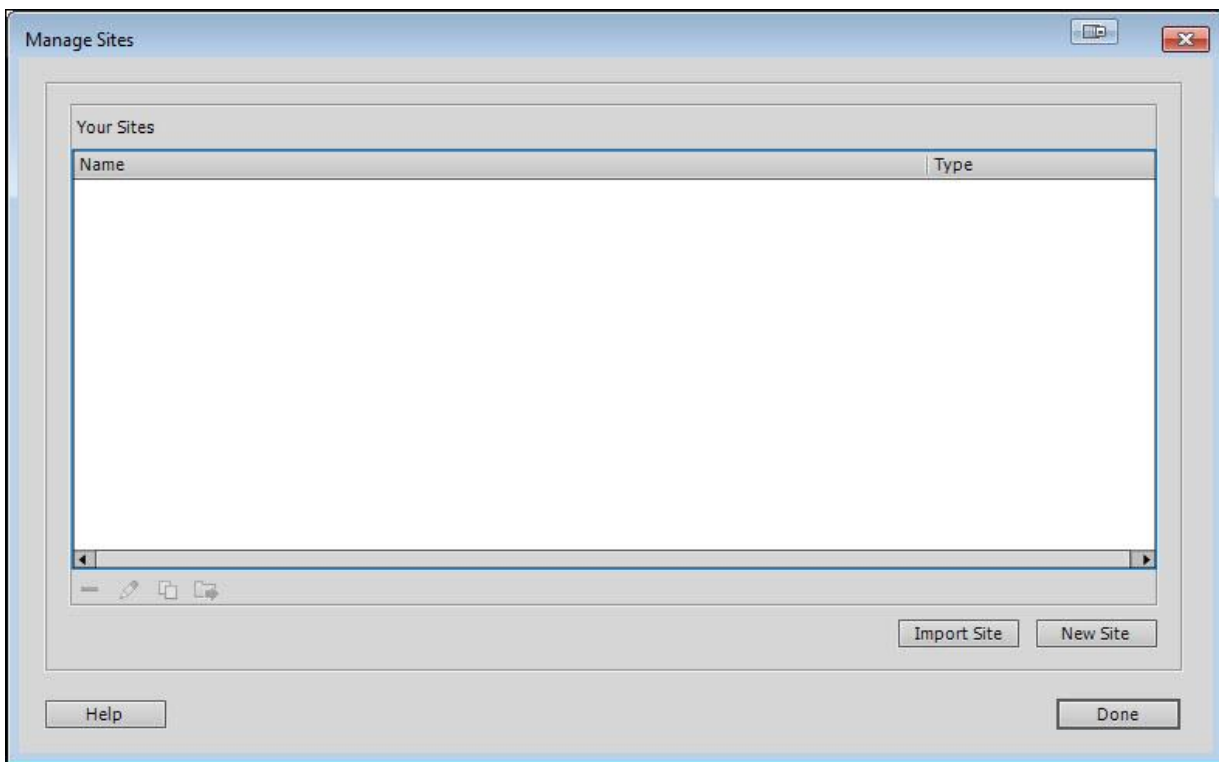


Figure 6

4. In the **Site Name** box, give your site a meaningful name.
5. In the **Local Site Folder** section, browse to and select a local folder to house your offline copy.

TigerWeb: Stand Alone Website Connection Information

- Click the **Servers** menu option in the left panel.

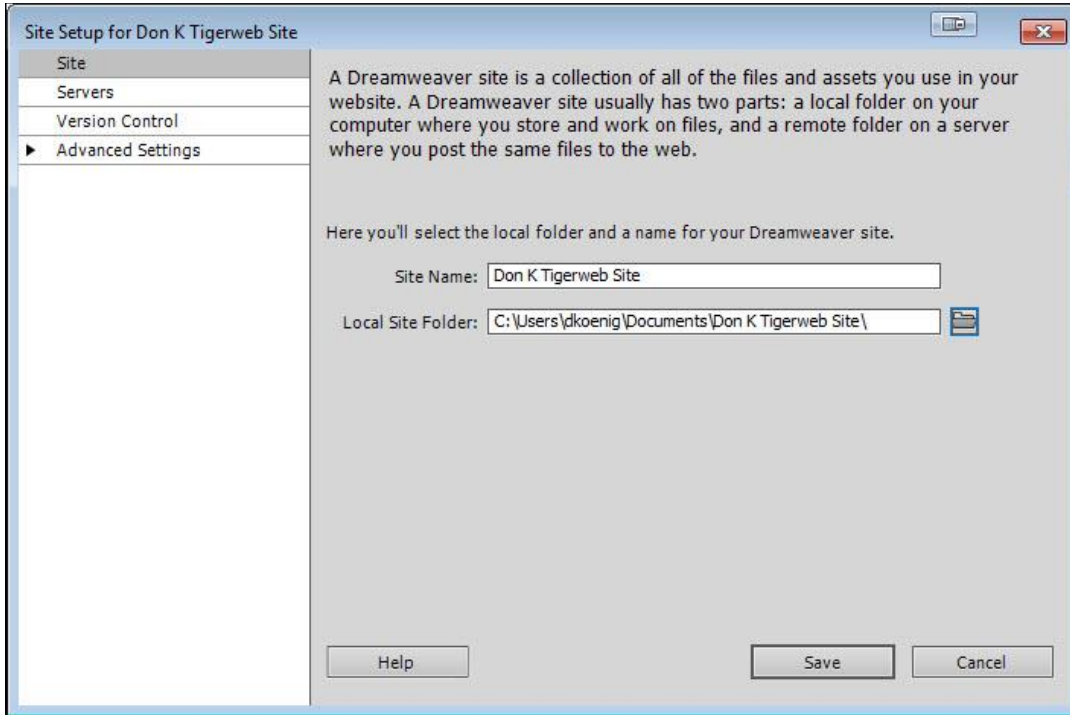


Figure 7

- Click the + sign to add a new server. The **Servers** menu will appear.

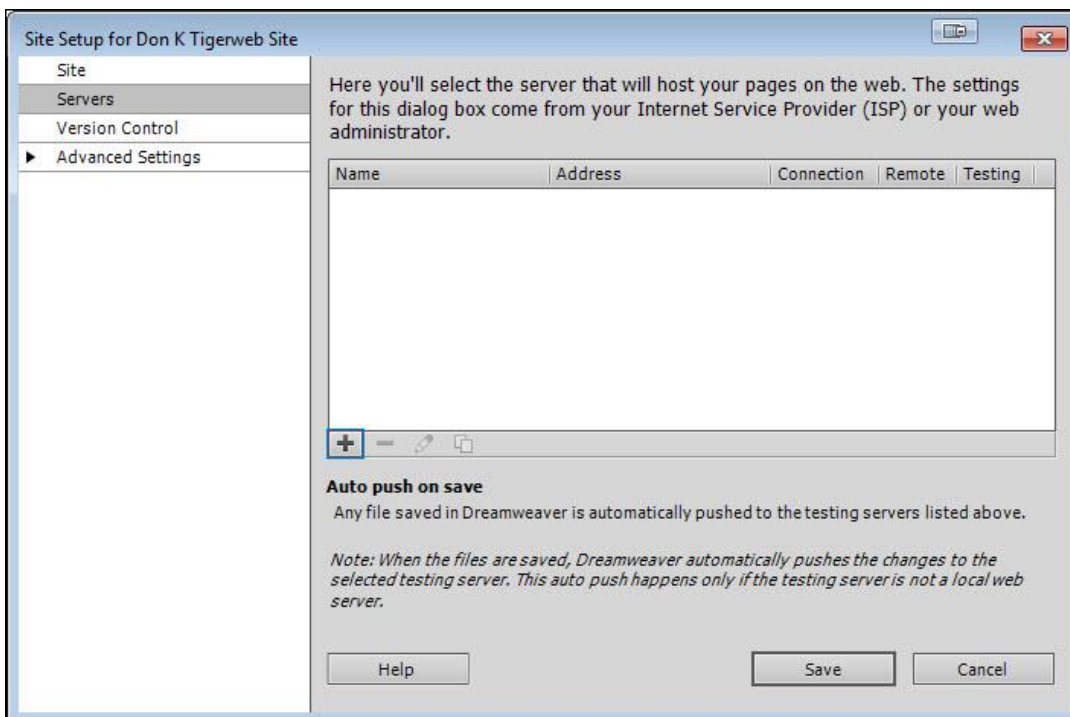


Figure 8

- In the **Server Name** box, give the server a meaningful name.
- Beside **Connect using**, select **SFTP**.
- In the **SFTP Address** box, type *tigerweb.towson.edu*.
- In the **Authentication** section, select the **Username and Password** radio button.

TigerWeb: Stand Alone Website Connection Information

- Enter your TU NetID and password in the appropriate fields and click the **Save Password** check box.
- Type your TigerWeb URL in the **Web URL** box and click **Save**.

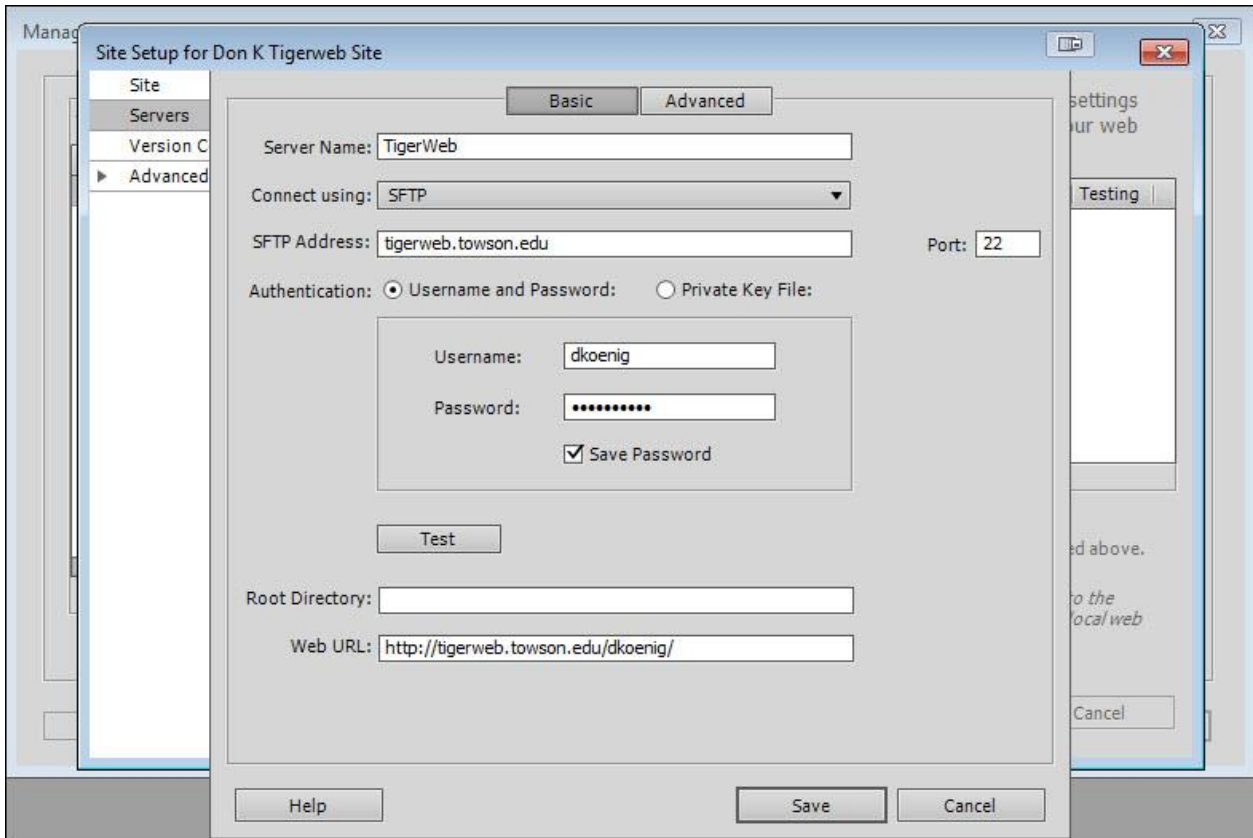


Figure 9

- Click Save in the **Site Setup** window.

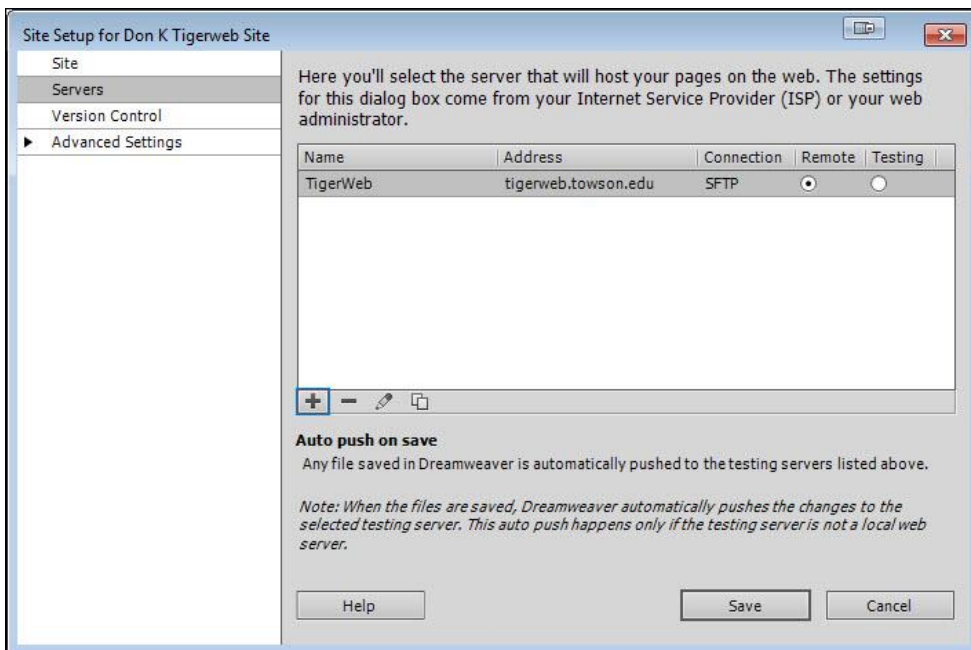


Figure 10

TigerWeb: Stand Alone Website Connection Information

15. You will be returned to the **Manage Sites** window. Click **Done** to exit.

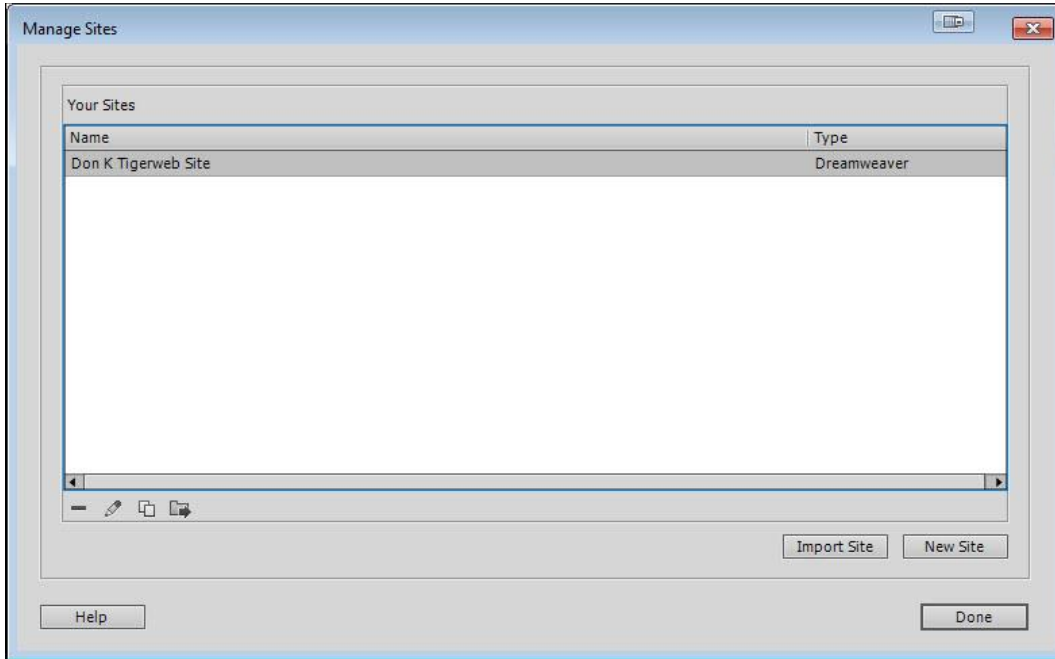


Figure 11

Connecting to TigerWeb Using Microsoft Expression Web

1. Launch **Microsoft Expression Web**.
2. From the **Site Menu**, select **Open Site**.

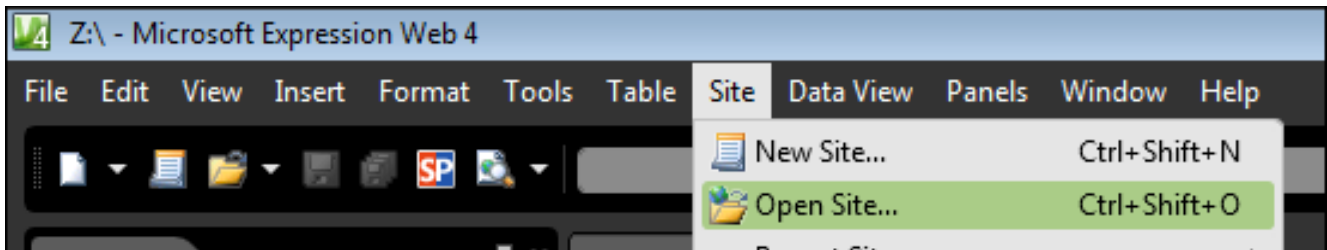


Figure 12

3. In the Open Site window, type ***sftp://tigerweb.towson.edu*** in the **Location** box.
4. Place a check mark in the **Add to managed list** box.

TigerWeb: Stand Alone Website Connection Information

5. In the **Name** box, give the connection a meaningful name.

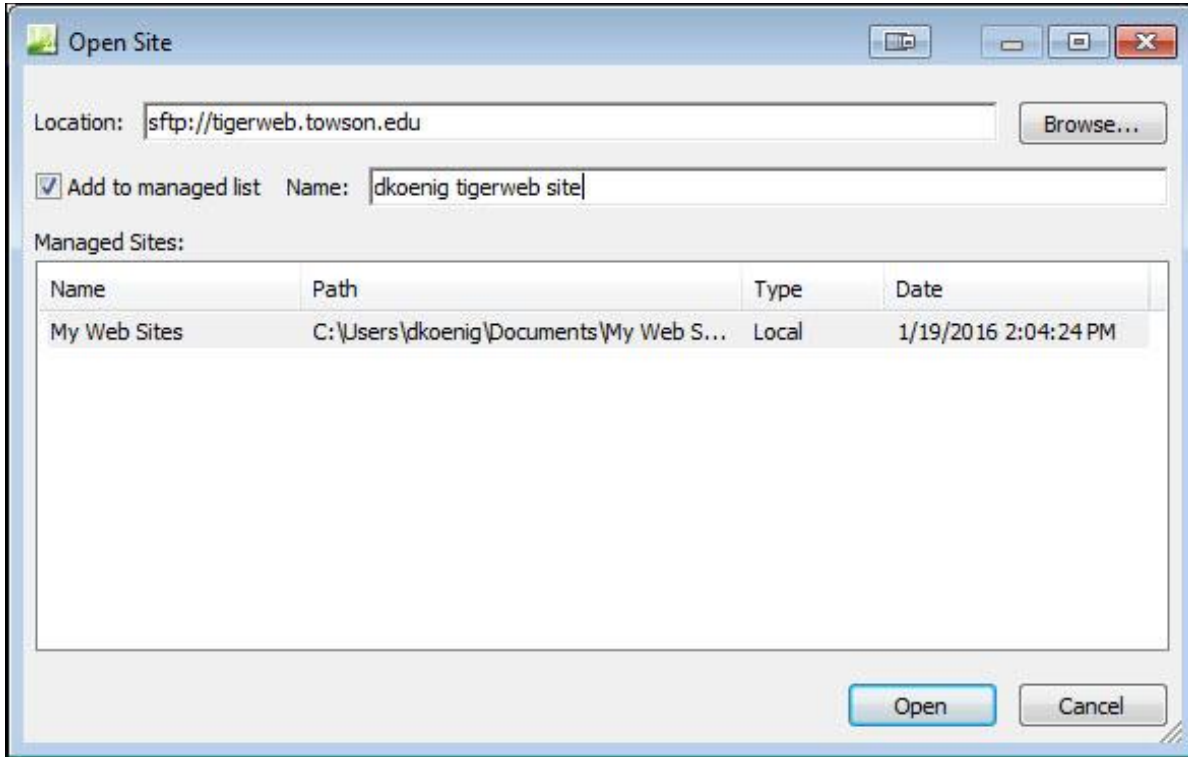


Figure 13

6. Click the **Open** button.

7. In the **Remote Site Editing Options** window, choose the **Edit live site now** option, then click ok.

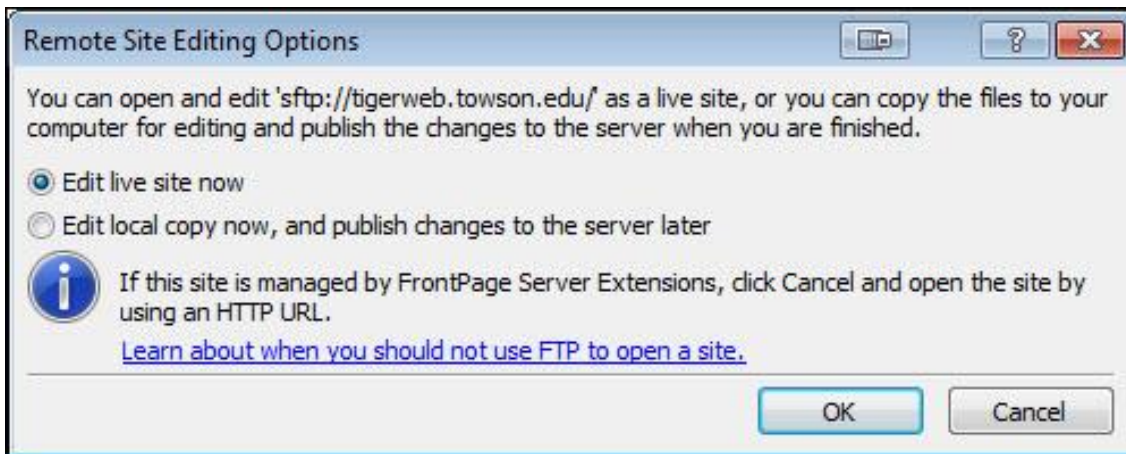


Figure 14

TigerWeb: Stand Alone Website Connection Information

8. A connection window will appear requesting your username and password. Enter your NetID and password in the appropriate fields, select the **Remember my password** option and click the **OK** button. Your site is now ready to be edited in Expression Web.



Figure 15