

# Panopto

Software Installation

---

## Introduction

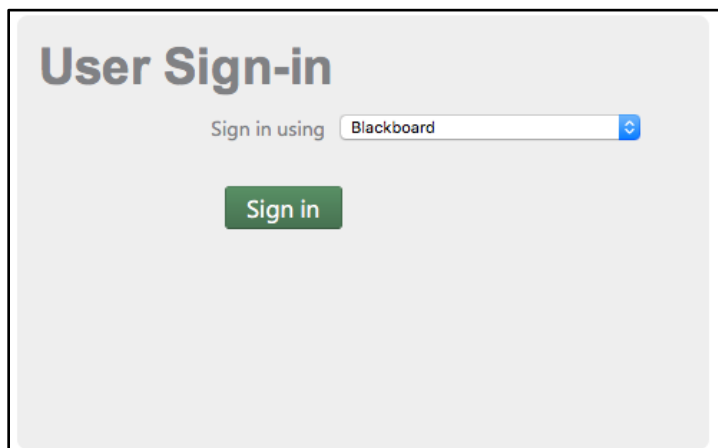
---

Panopto student access is granted when a faculty member creates an Assignment Folder. Students enrolled in that Blackboard course can install the Panopto Recorder and upload recordings to the assignments folder. This document steps you through the installation process for non-Towson owned machines.

## Installation

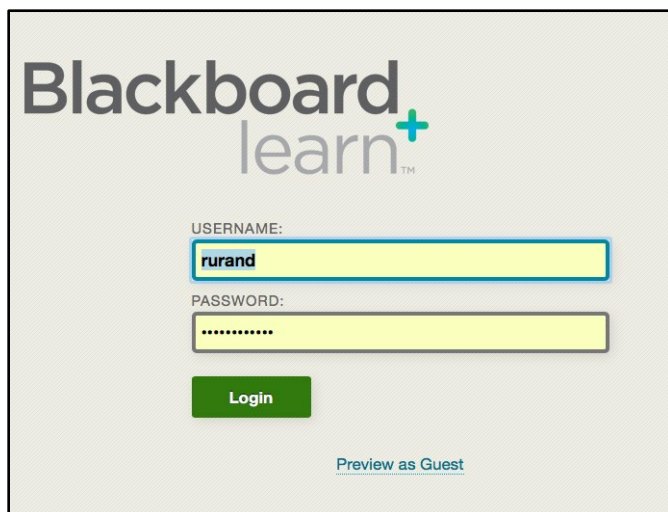
---

1. Login to the Panopto web interface by visiting [towsonu.hosted.panopto.com](http://towsonu.hosted.panopto.com).
2. Click the **Sign in** button.



**Figure 1**

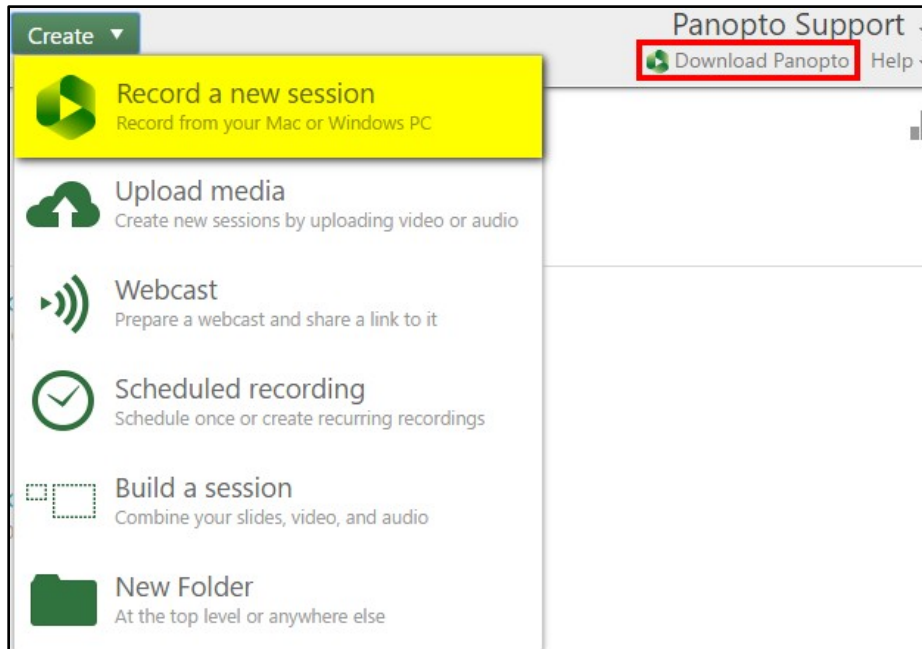
3. Enter your Blackboard credentials and click **Login**.



**Figure 2**

## Panopto: Software Installation

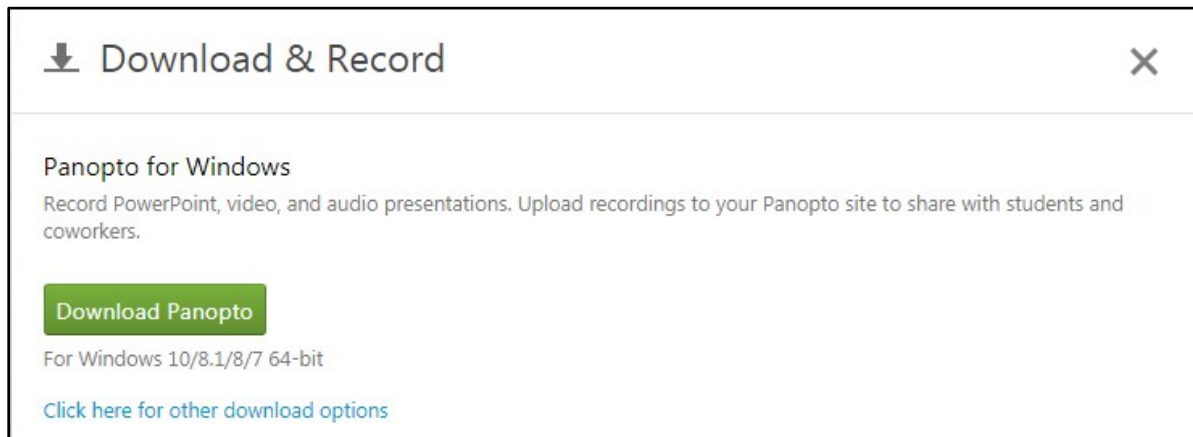
- Click the **Create** button and choose **Record a new session** from the drop-down menu. Alternatively, you can click the **Download Panopto** link under **Panopto Support**.



**Figure 3**

- The **Download & Record** screen will appear. Click the **Download Panopto** button.

Note: If you would like to download an installer for a different operating system, click the **Click here for other download options** link.

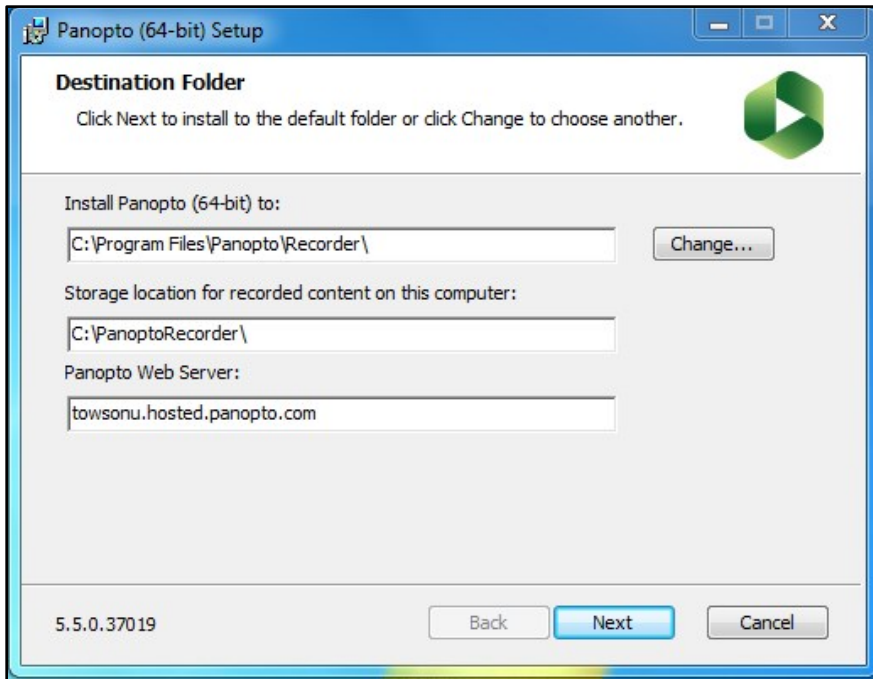


**Figure 4**

- Locate the file that you have downloaded and run the application. The installer will self-extract and begin the installation.

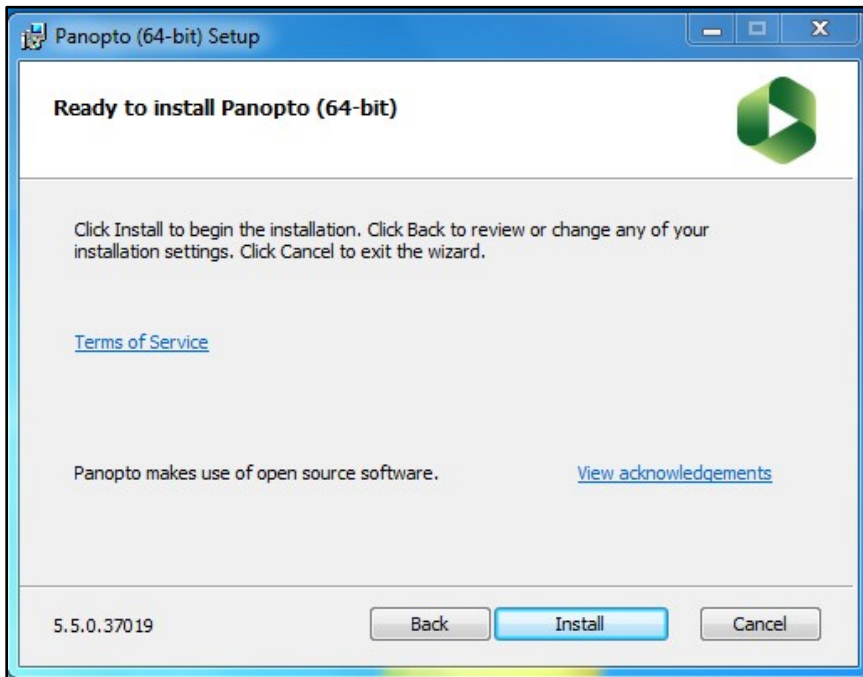
## Panopto: Software Installation

- On the **Destination Folder** screen, verify that the **Panopto Web Server** address is [towson.hosted.panopto.com](http://towson.hosted.panopto.com) and click **Next**.



**Figure 5**

- Click **Install** and the installation will begin.



**Figure 6**

- Once Panopto is installed you will be able to open the software and login as you would normally.