

Windows 7

Introduction

Windows 7 should automatically detect the tu-secure network and you should only need to click connect and enter your NetID and password. However, if for some reason you have trouble connecting, you may set up the connection manually. This self-help document will step you through how to manually connect Windows 7 to tu-secure (Towson's Secure Wireless connection). If you need additional assistance, please contact the Help Center at 410-704-5151.

Configure Windows 7 for tu-secure

1. Click the **Start** button located at the bottom left hand corner of your computer screen.
2. Click **Control Panel**.

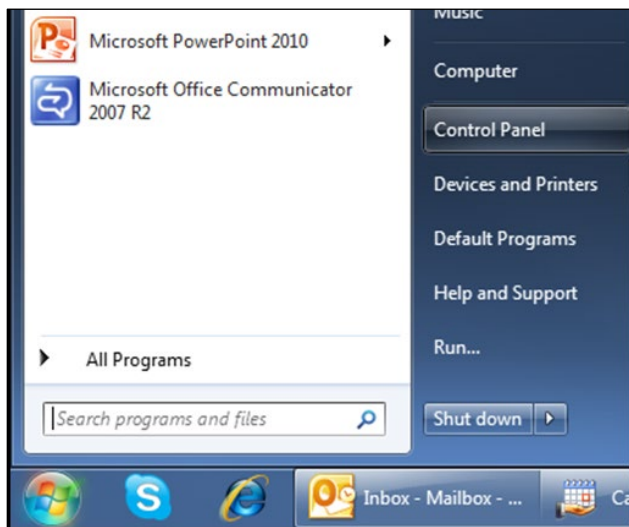


Figure 1

3. The **Control Panel** window will appear. Click **Network and Internet**.

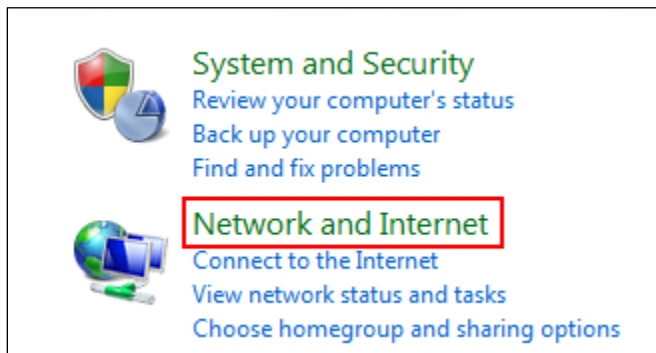


Figure 2

- 4. Click **Network and Sharing Center**.

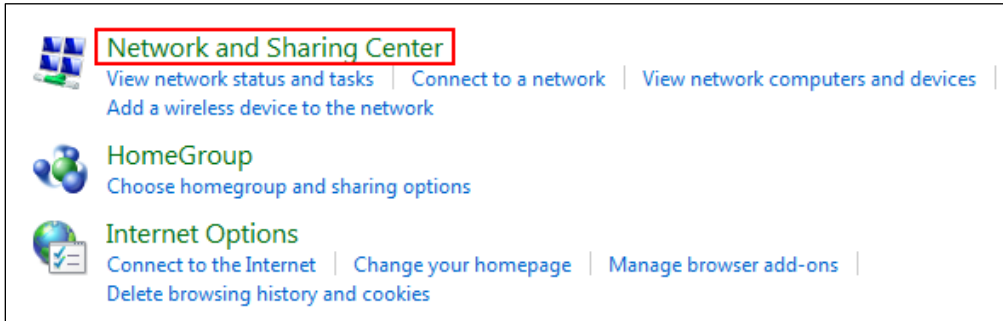


Figure 3

- 5. From the **Network and Sharing Center** window, select **Manage wireless networks**.

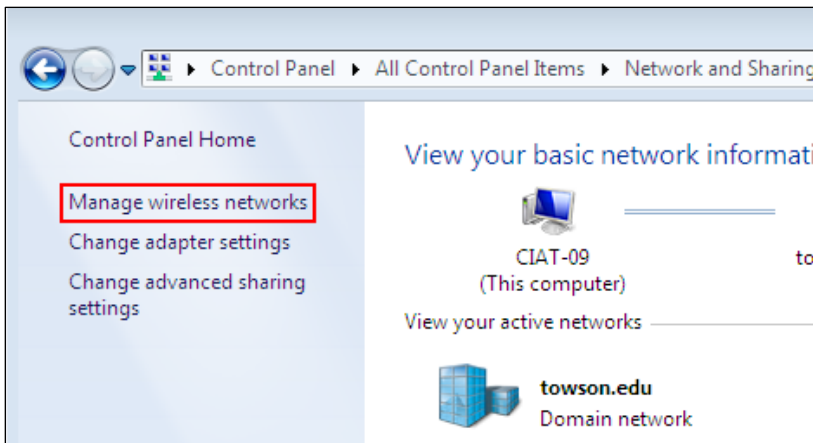


Figure 4

- 6. Click the **Add** button.

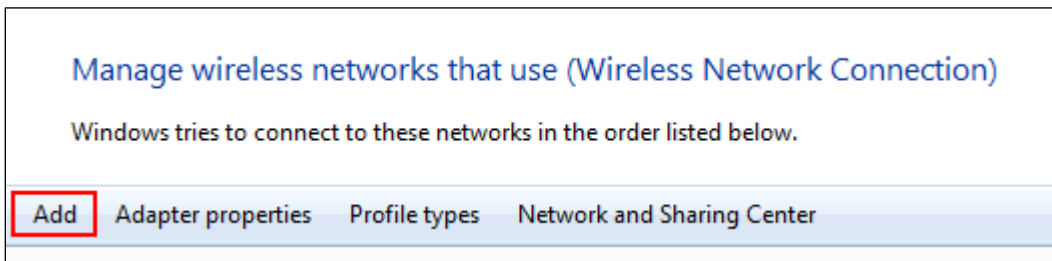


Figure 5

- 7. The **Manually connect to wireless network window** will appear. Click **Manually create a network profile**.

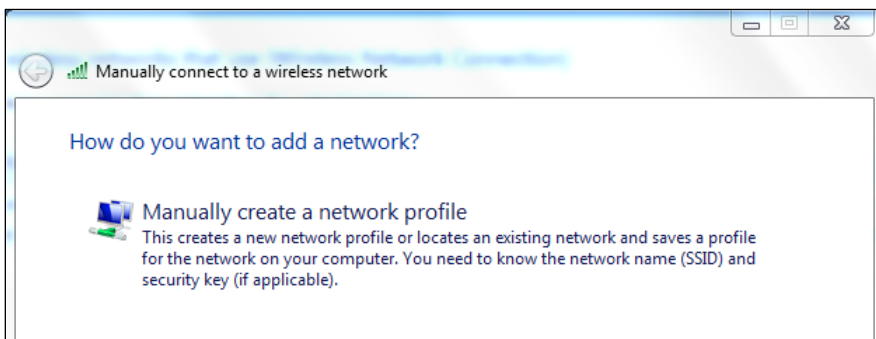


Figure 6

Window 7 tu-secure Manual configuration instructions

8. In the **Manually connect to a wireless network** dialog box, do the following:
 - Click in the box beside **Network name** and type **tu-secure** .
 - Beside **Security type**:, click the drop-down arrow and select **WPA2-Enterprise** .
 - Beside **Encryption type**:, click the drop-down arrow and select **AES** (it may already be selected).
 - Place a check in the box beside **Start this connection automatically**.

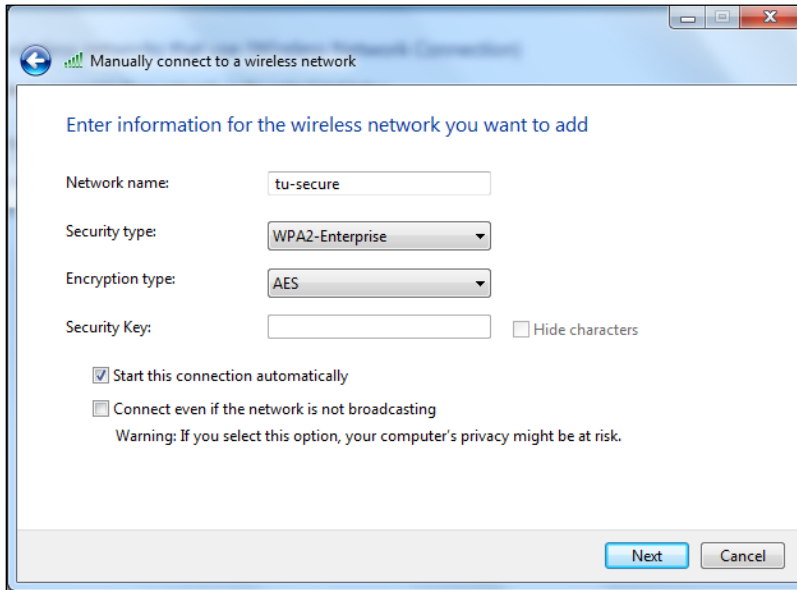


Figure 7

9. Click the **Next** button.
10. A dialog box will appear saying **Successfully added tu-secure**. Click the **Close** button. You will see **tu-secure** now listed under **Networks you can view, modify and reorder** in the **Manage Wireless Networks** window.
11. Select and then right-click on **tu-secure** and select **Properties** from the menu. The **tu-secure Wireless Network Properties** window will appear.
12. Click the **Security** tab.

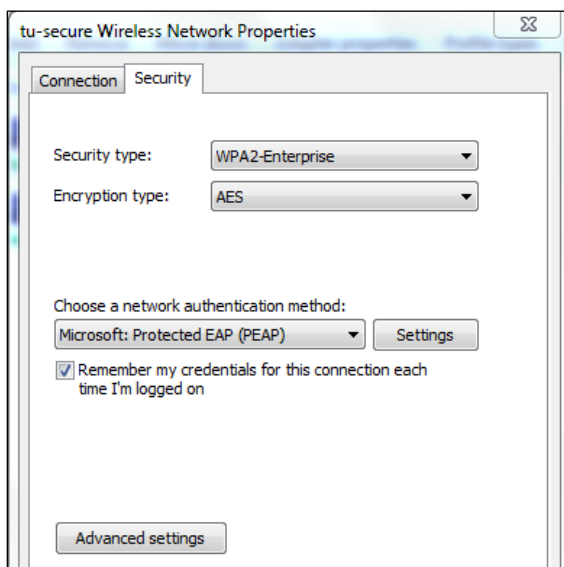


Figure 8

Window 7 tu-secure Manual configuration instructions

13. Click the **Settings** button beside **Choose a network authentication method**.
14. In the **Protected EAP Properties** dialog box do the following.
 - Make sure **Validate server certificate** is checked.
 - Check the **Connect to these servers:** and then click in the white box under this selection.
 - Type **acs1-cdc.towson.edu;acs1-udc.towson.edu** in the box.
 - Under **Trusted Root Certification Authorities:**, place a check beside **AddTrust External CA Root** or **UserTrust RSA Certificate Authority**.

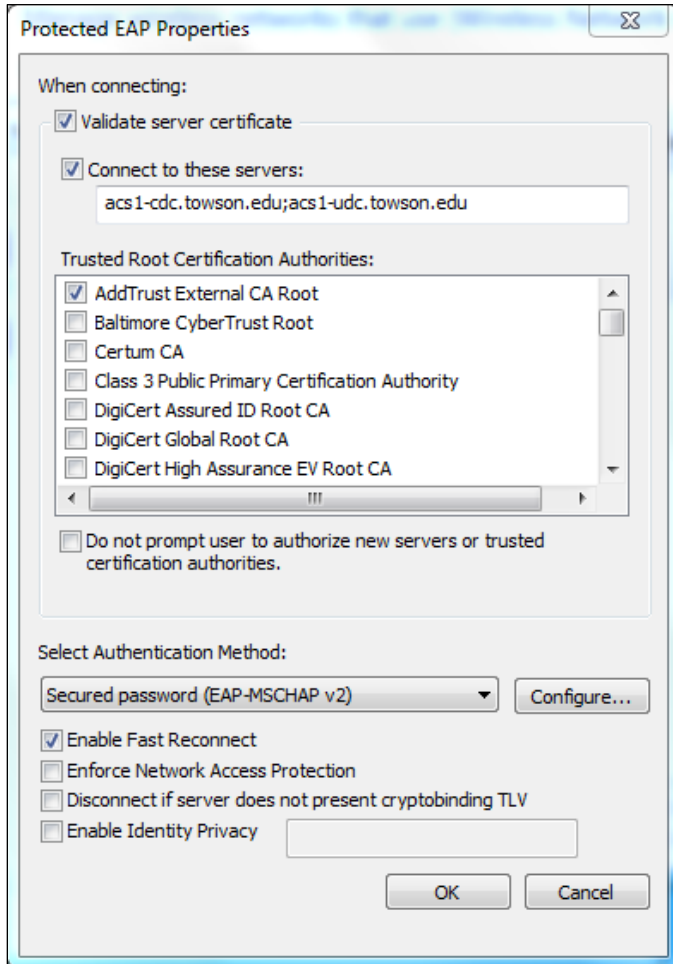


Figure 9

15. Click **OK** at the **Protected EAP Properties** window. You'll be returned to the **tu-secure Wireless Network Properties** window.

16. Click **Advanced Settings**.

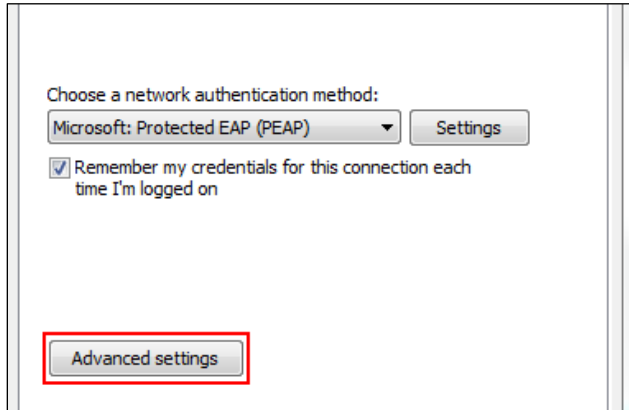


Figure 10

17. Check **Enable single sign on for this network**.

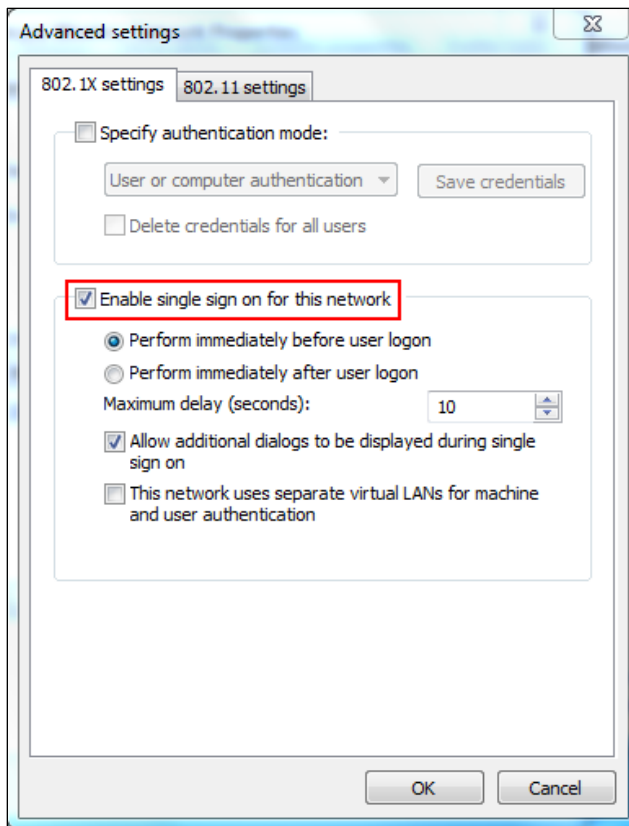


Figure 11

18. Click **OK** to exit the **Advanced Settings**.
19. Close all other windows and restart your computer.