

# Towson University's VPN

Virtual Private Network

---

## Introduction

---

Towson University's VPN allows you connect to the campus network through any computer. It is mainly used for faculty, staff, and students who need to:

- Map to network drives when not on Towson University's network or while on tu-openaccess
- Use printers they have configured
- Connect directly to a personal (H:) and/or departmental (O:) file share when they are not using Virtual Workspace
- Use Microsoft Outlook to connect to an Exchange account using Exchange protocol when not using Outlook Web Access or Virtual Workspace

**Note:** Students can access files on their H drive via <http://webdisk.towson.edu> without using the VPN.

## Installing the VPN Client

---

**Note:** The VPN Client can only be installed on your computer if it is either connected physically to Towson University's Ethernet or via TU-Secure wireless network.

1. Open your preferred web browser and navigate to **vpnc.towson.edu**.
2. Enter your **USERNAME (NetID)** and **PASSWORD** and click the **Login** button.

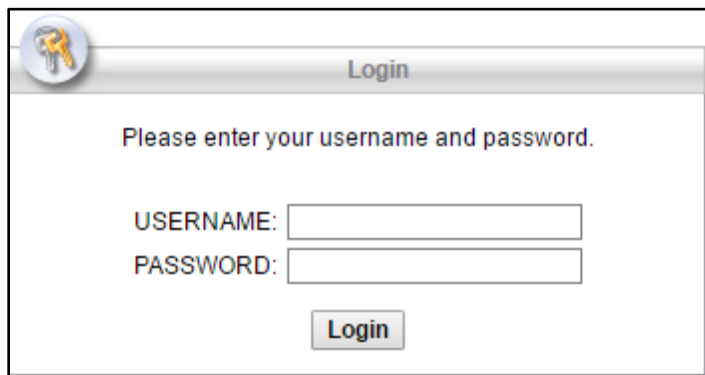


Figure 1

3. A **WARNING!** message will appear. Click the **Continue** button.

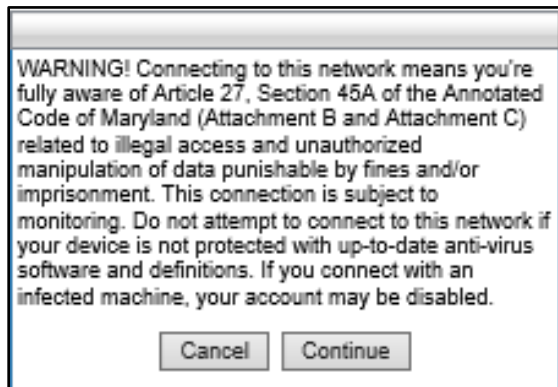


Figure 2

4. The AnyConnect Secure Mobility Client Download window will appear, click the Download for Windows button.

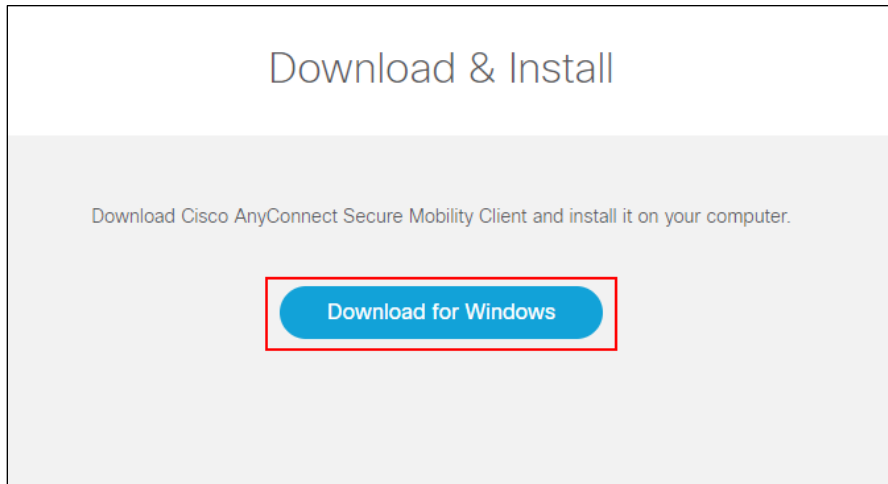


Figure 3

5. The file will begin to download. Once the download has finished, double-click the file.
6. An **Open File - Security Warning** dialog box will appear. Click **Run**.

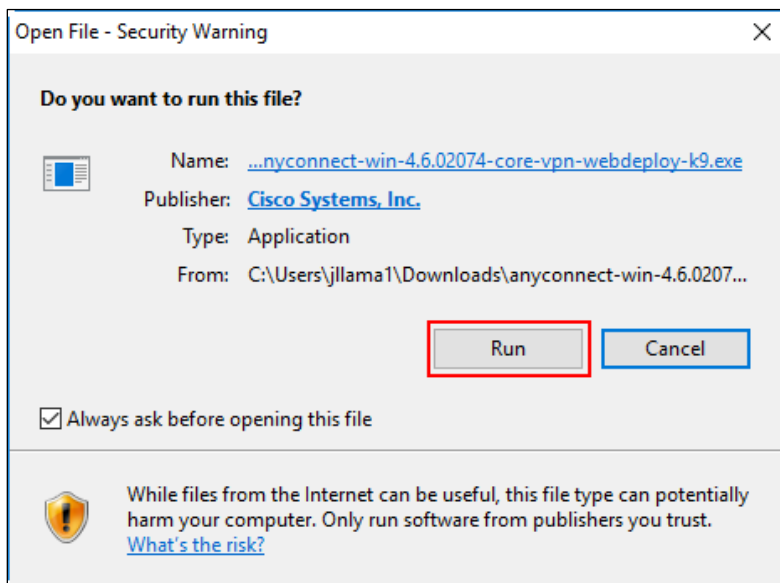


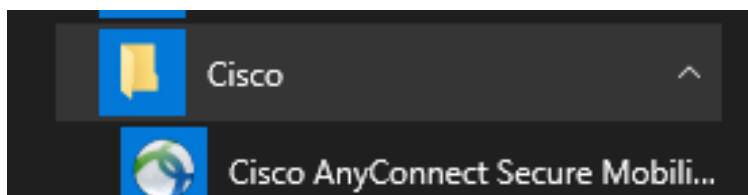
Figure 4

7. The **Cisco AnyConnect Secure Mobility Client Setup Wizard** will appear. Follow the steps to finish the installation.

## Connecting to the VPN

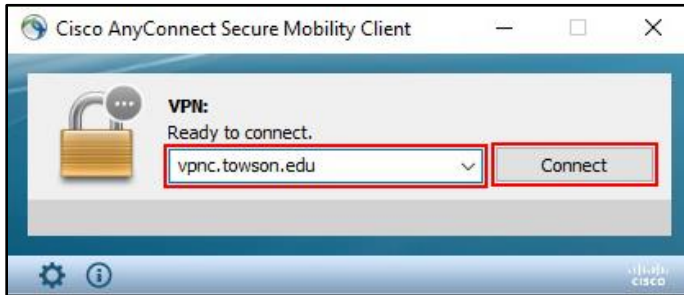
---

1. Once the installation has finished, go to the **Cisco** folder of the **Start** menu and then click on the **Cisco AnyConnect Secure Mobility Client** icon.



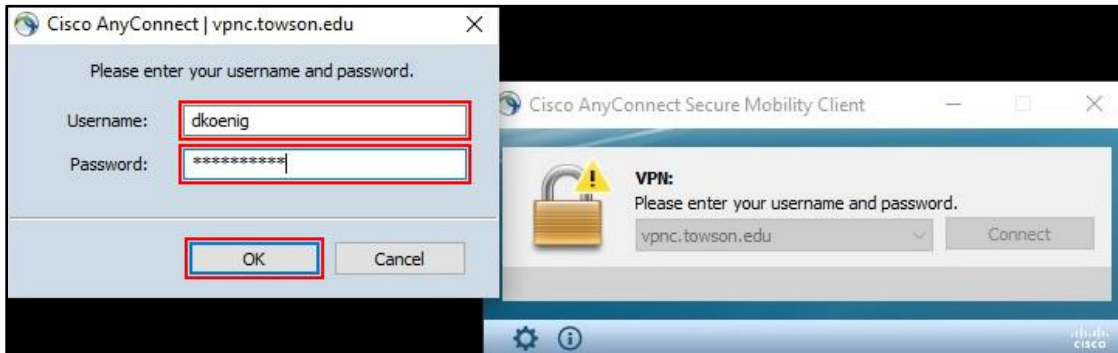
**Figure 5**

2. The Cisco AnyConnect client will launch in the lower right corner of your desktop. First time users must type **vpnc.towson.edu** in the text field beneath **Ready to connect**.
3. Click the **Connect** button.



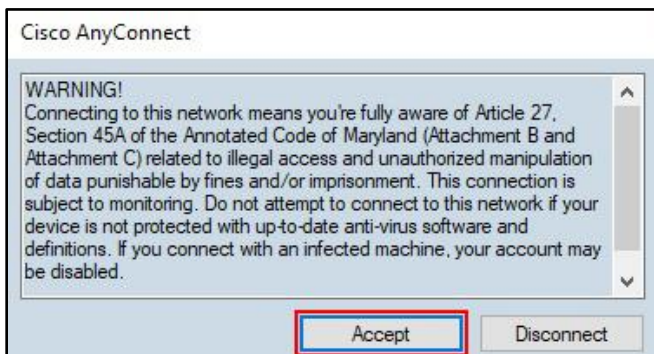
**Figure 6**

4. A new window will appear prompting your for your **Username** (NetID) and **Password**. Type your NetID and password in the appropriate fields and then click the **OK** button.



**Figure 7**

5. A **Warning!** message will appear. Click the **Accept** button.



**Figure 8**

6. In the lower-right corner of the screen, you will receive a message confirming the VPN is connected.

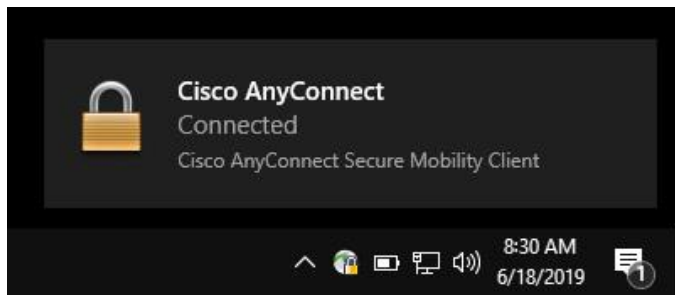


Figure 9

## Mapping your Network Drives

After connecting to Towson University's VPN, you may now map your network drives to your PC.

1. Right-click the **This PC** icon on your desktop.
2. Click **Map network drive...**

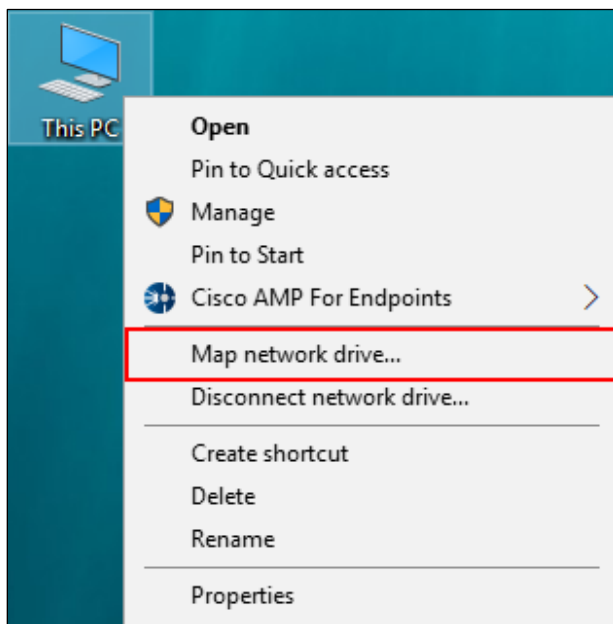


Figure 10

3. Click the **drop down menu** beside **Drive:** and select your drive letter.

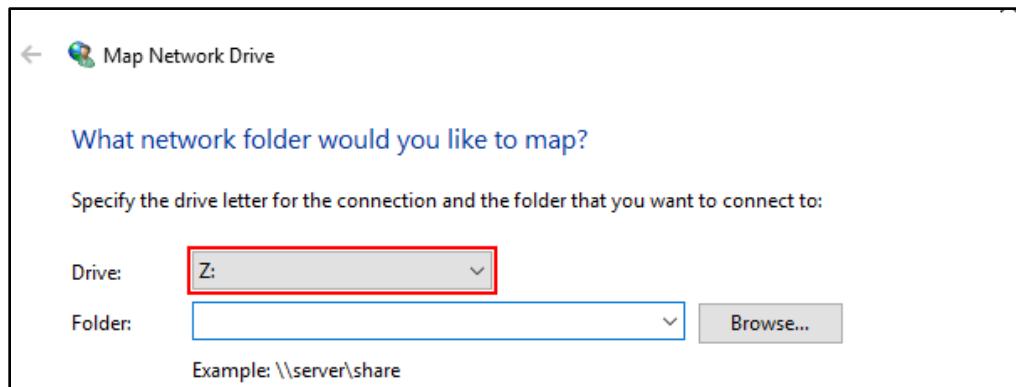


Figure 11

- Click the text box beside **Folder:** and type in the network drive you need to access:

## Faculty and Staff

- H Drive: [\\homeshare\NetID\\$](#) (Replace NetID with your NetID)
- O Drive: [\\deptshare\DepartmentName\\$](#) [Replace DepartmentName with your departmental abbreviation (ex. HR, OTS)]
- Any other drive: [\\customshare\DriveName](#) (Replace DriveName with the name of your drive, this can be located in **My Computer** or **This PC** of your Towson computer)

## Students

- H Drive: [\\studentshare\NetID\\$](#) (Replace NetID with your NetID). Students can also access their H Drive, without using the VPN through WebDisk: <https://webdisk.towson.edu/>
  - Tigerweb: [\\tigerweb\NetID\\$](#) (Replace NetID with your NetID)
- Click **Finish**.

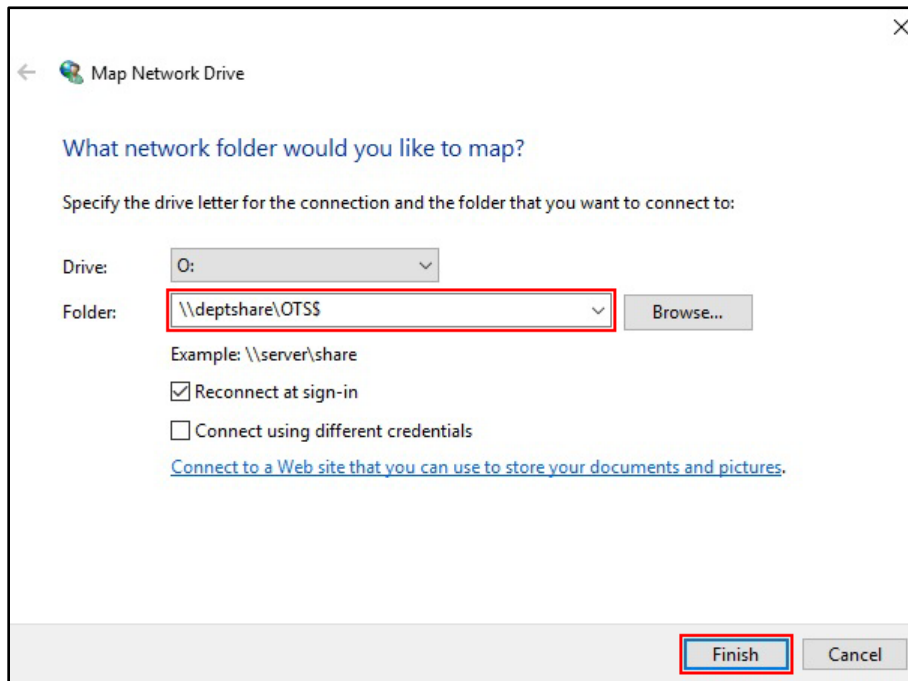


Figure 12

## Disconnect from VPN

1. Click the **Show hidden icons** button in the bottom right-hand corner.



Figure 13

2. Click the Cisco AnyConnect Secure Mobility Client button.

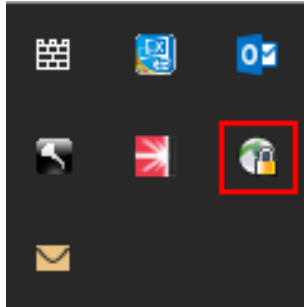


Figure 14

3. The client will open. Click the **Disconnect** button.

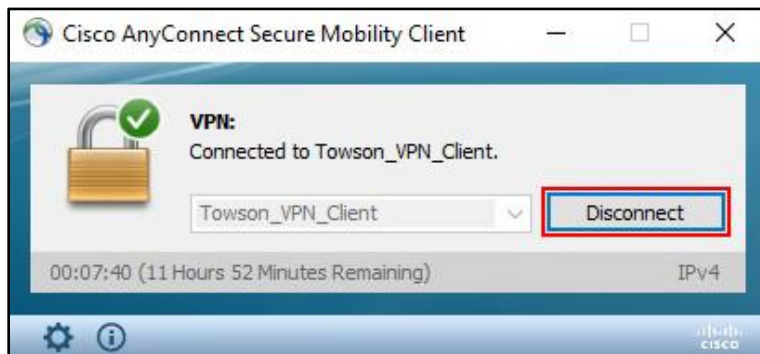


Figure 15

4. Click the **Close** button.

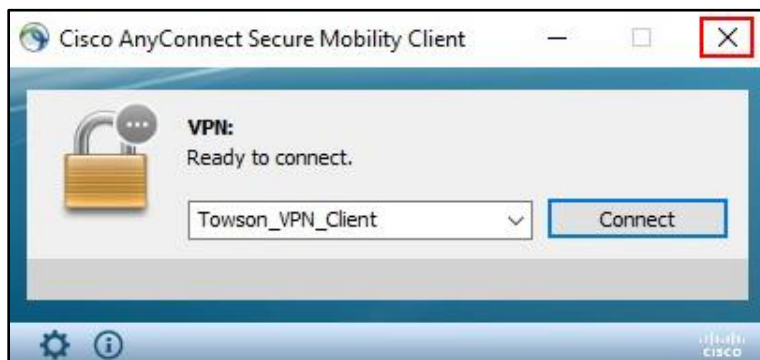


Figure 16

## Reconnecting to VPN

1. Click the **Show hidden icons** button in the bottom right-hand corner.



Figure 17

2. Click the Cisco AnyConnect Secure Mobility Client button.

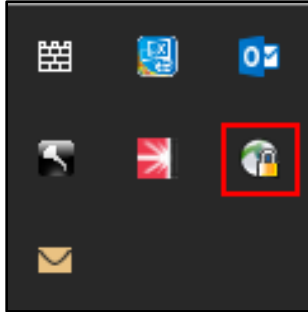


Figure 18

3. Click **Connect**. An **authentication** dialog box will appear.
4. Enter your **Username (NetID)** and **Password** in the appropriate fields and then click the **OK** button.

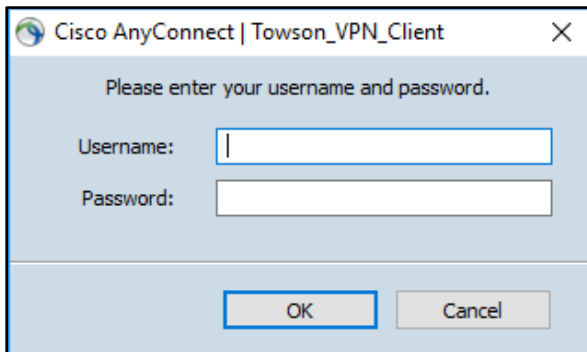


Figure 19

5. A **WARNING!** message will appear. Click the **Accept** button.

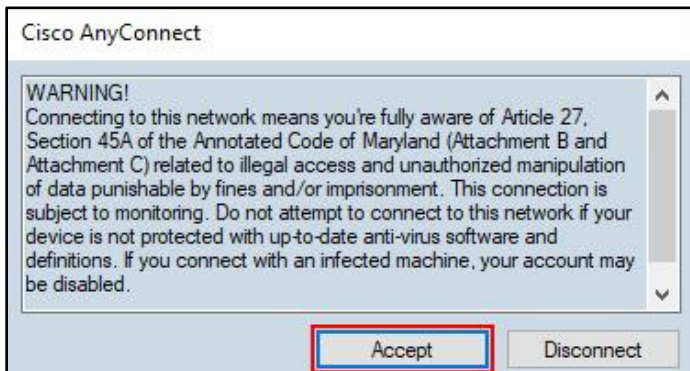


Figure 20